

STATE OF UTAH



OFFICE OF THE LIEUTENANT GOVERNOR

CERTIFICATE OF ANNEXATION

I, SPENCER J. COX, LIEUTENANT GOVERNOR OF THE STATE OF UTAH, HEREBY CERTIFY THAT there has been filed in my office a notice of annexation from ALPINE CITY, dated August 23<sup>rd</sup>, 2016, complying with Section 10-2-425, Utah Code Annotated, 1953, as amended.

NOW, THEREFORE, notice is hereby given to all whom it may concern that the attached is a true and correct copy of the notice of annexation, referred to above, on file with the Office of the Lieutenant Governor pertaining to ALPINE CITY, located in Utah County, State of Utah.



IN TESTIMONY WHEREOF, I have hereunto set my hand, and affixed the Great Seal of the State of Utah this 5<sup>th</sup> day of January, 2017 at Salt Lake City, Utah.

A handwritten signature in black ink, appearing to read "Spencer J. Cox".

SPENCER J. COX  
Lieutenant Governor



Received

OCT 26 2016

Spencer J. Cox  
Lieutenant Governor

Office of the Lieutenant Governor  
Utah State Capitol Complex  
P.O. Box 142325  
Salt Lake City, UT 84114-2325

October 21, 2016

### NOTICE OF IMPENDING BOUNDARY ACTION

Pursuant to Utah Codes 10-2-425 and 67-1a-6.5, the City of Alpine hereby gives notice of an impending boundary action.

The City of Alpine located in Utah County, Utah intends to annex property currently located in Utah County into Alpine City. The Alpine City Council adopted Ordinance No. 2016-06 approving the annexation. Copies of the ordinance and the annexation plat are enclosed herewith.

The undersigned as the City Recorder of Alpine City, Utah does hereby certify that all legal requirements of the annexation have been met.

Charmayne G. Warnock  
Alpine City Recorder

Mayor Sheldon Wimmer

City Council  
Roger Bennett

Lon Lott  
Ramon Beck

Kimberly Bryant  
Troy Stout

20 North Main Street  
Alpine, UT 84004  
(801) 756-6347

**ORDINANCE NO. 2016-19**

**COCOLALLA ANNEXATION  
AN ORDINANCE OF ANNEXATION OF TERRITORY TO THE MUNICIPALITY OF  
ALPINE CITY AND ESTABLISHING A ZONE FOR THE ANNEXED PROPERTY.**

WHEREAS, the City Council of Alpine, Utah, has been petitioned to annex certain property and has given public notice of such petition and the protest period has now run without protest; and

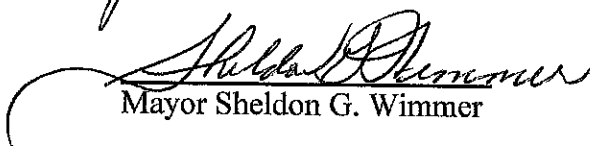
WHEREAS, on the 23<sup>rd</sup> day of August, 2016, the Alpine City Council held a public hearing according to the law, concerning the annexation of certain territory contiguous to the boundary of said City; and

WHEREAS, the City may establish a zone designation at the time of annexation pursuant to Utah Code section 10-9A-506;

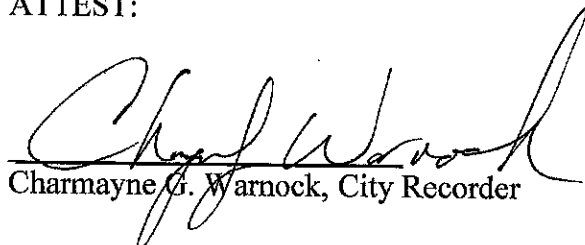
NOW, THEREFORE, be it ordained by the City Council of Alpine, Utah, that;

1. The territory described in Exhibit A hereto is hereby annexed into Alpine City
2. The City staff shall take all necessary steps to complete the annexation including filing the necessary documents with the Lieutenant Governor of the State of Utah and the Utah County Recorder.
3. The newly annexed territory shall all have the zone designation of CR-40,000.
4. This ordinance shall take effect upon posting.

PASSED and dated this 23<sup>rd</sup> day of August, 2016.

  
Mayor Sheldon G. Wimmer

ATTEST:

  
Charmayne G. Warnock, City Recorder



**EXHIBIT A**

**BOUNDARY DESCRIPTION**

All of Lots 1, 2, & 3 of Plat E Amended, Alpine Cove Subdivision according to the official plat of record on file at the Utah County Recorder's Office, more particularly described as follows:

Area = 11.9786 acres

BASIS OF BEARING = Utah State Plane Coordinate System Central Zone

## **EXHIBIT A**

### **BOUNDARY DESCRIPTION**

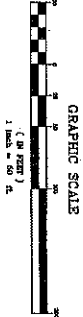
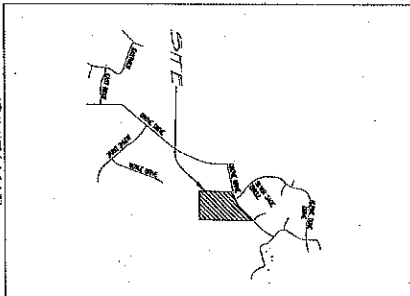
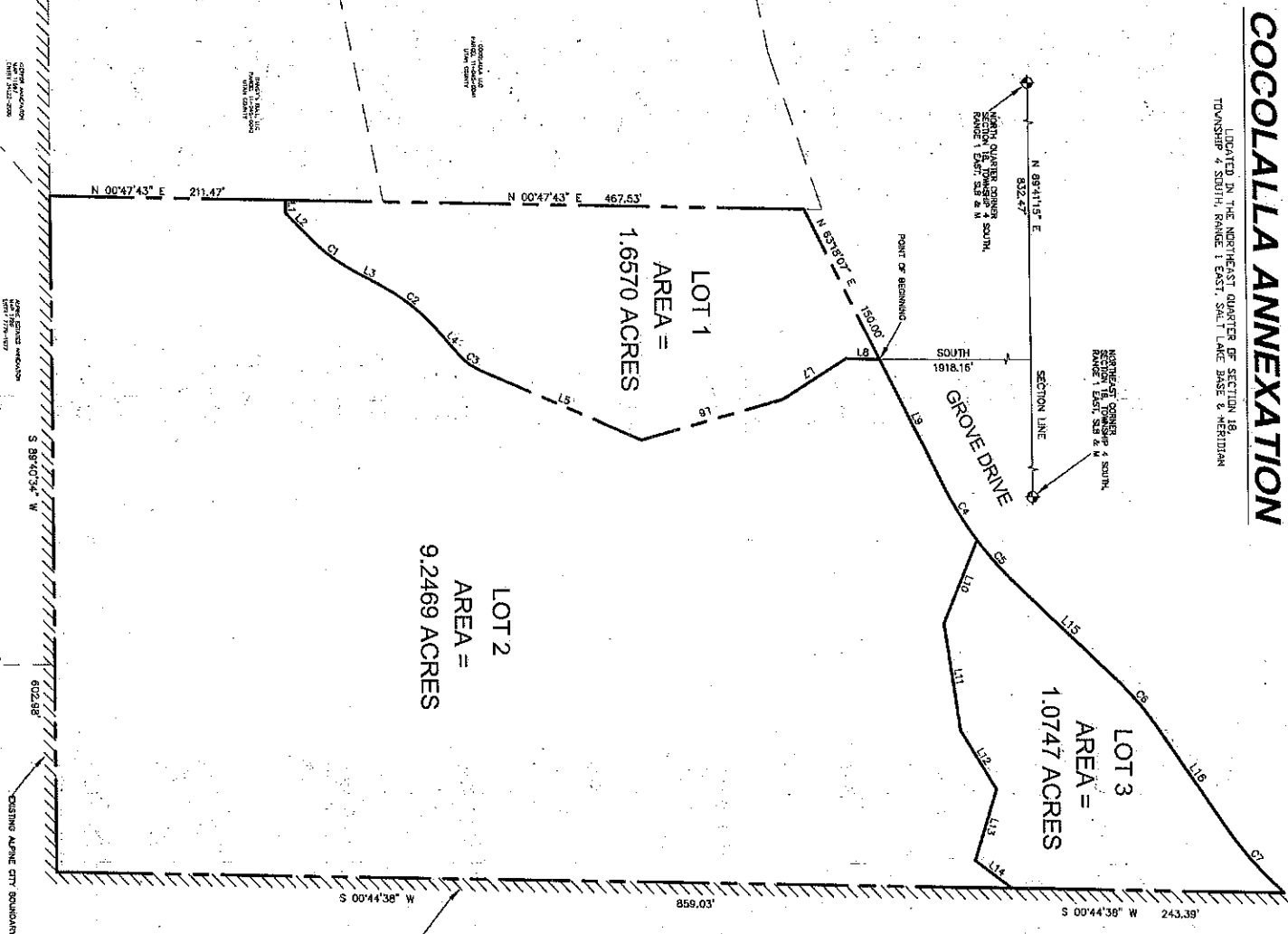
All of Lots 1, 2, & 3 of Plat E Amended, Alpine Cove Subdivision according to the official plat of record on file at the Utah County Recorder's Office, more particularly described as follows:

Area = 11.9786 acres

BASIS OF BEARING = Utah State Plane Coordinate System Central Zone

# COCOLALLA ANNEXATION

LOCATED IN THE NORTHEAST QUARTER OF SECTION 18,  
TOWNSHIP 4 SOUTH, RANGE 1 EAST, SALT LAKE BASE & MERIDIAN



LINE	LENGTH	BEARING
L1	150.00'	N 63°50' E
L2	150.00'	N 63°50' E
L3	150.00'	N 63°50' E
L4	150.00'	N 63°50' E
L5	150.00'	N 63°50' E
L6	150.00'	N 63°50' E
L7	150.00'	N 63°50' E
L8	150.00'	N 63°50' E
L9	150.00'	N 63°50' E
L10	150.00'	N 63°50' E
L11	150.00'	N 63°50' E
L12	150.00'	N 63°50' E
L13	150.00'	N 63°50' E
L14	150.00'	N 63°50' E
L15	150.00'	N 63°50' E
L16	150.00'	N 63°50' E
L17	150.00'	N 63°50' E
L18	150.00'	N 63°50' E
L19	150.00'	N 63°50' E
L20	150.00'	N 63°50' E
L21	150.00'	N 63°50' E
L22	150.00'	N 63°50' E
L23	150.00'	N 63°50' E
L24	150.00'	N 63°50' E
L25	150.00'	N 63°50' E
L26	150.00'	N 63°50' E
L27	150.00'	N 63°50' E
L28	150.00'	N 63°50' E
L29	150.00'	N 63°50' E
L30	150.00'	N 63°50' E
L31	150.00'	N 63°50' E
L32	150.00'	N 63°50' E
L33	150.00'	N 63°50' E
L34	150.00'	N 63°50' E
L35	150.00'	N 63°50' E
L36	150.00'	N 63°50' E
L37	150.00'	N 63°50' E
L38	150.00'	N 63°50' E
L39	150.00'	N 63°50' E
L40	150.00'	N 63°50' E
L41	150.00'	N 63°50' E
L42	150.00'	N 63°50' E
L43	150.00'	N 63°50' E
L44	150.00'	N 63°50' E
L45	150.00'	N 63°50' E
L46	150.00'	N 63°50' E
L47	150.00'	N 63°50' E
L48	150.00'	N 63°50' E
L49	150.00'	N 63°50' E
L50	150.00'	N 63°50' E
L51	150.00'	N 63°50' E
L52	150.00'	N 63°50' E
L53	150.00'	N 63°50' E
L54	150.00'	N 63°50' E
L55	150.00'	N 63°50' E
L56	150.00'	N 63°50' E
L57	150.00'	N 63°50' E
L58	150.00'	N 63°50' E
L59	150.00'	N 63°50' E
L60	150.00'	N 63°50' E
L61	150.00'	N 63°50' E
L62	150.00'	N 63°50' E
L63	150.00'	N 63°50' E
L64	150.00'	N 63°50' E
L65	150.00'	N 63°50' E
L66	150.00'	N 63°50' E
L67	150.00'	N 63°50' E
L68	150.00'	N 63°50' E
L69	150.00'	N 63°50' E
L70	150.00'	N 63°50' E
L71	150.00'	N 63°50' E
L72	150.00'	N 63°50' E
L73	150.00'	N 63°50' E
L74	150.00'	N 63°50' E
L75	150.00'	N 63°50' E
L76	150.00'	N 63°50' E
L77	150.00'	N 63°50' E
L78	150.00'	N 63°50' E
L79	150.00'	N 63°50' E
L80	150.00'	N 63°50' E
L81	150.00'	N 63°50' E
L82	150.00'	N 63°50' E
L83	150.00'	N 63°50' E
L84	150.00'	N 63°50' E
L85	150.00'	N 63°50' E
L86	150.00'	N 63°50' E
L87	150.00'	N 63°50' E
L88	150.00'	N 63°50' E
L89	150.00'	N 63°50' E
L90	150.00'	N 63°50' E
L91	150.00'	N 63°50' E
L92	150.00'	N 63°50' E
L93	150.00'	N 63°50' E
L94	150.00'	N 63°50' E
L95	150.00'	N 63°50' E
L96	150.00'	N 63°50' E
L97	150.00'	N 63°50' E
L98	150.00'	N 63°50' E
L99	150.00'	N 63°50' E
L100	150.00'	N 63°50' E

LINE	LENGTH	BEARING	AREA
L1	150.00'	N 63°50' E	1.6570
L2	150.00'	N 63°50' E	9.2469
L3	150.00'	N 63°50' E	1.0747
L4	150.00'	N 63°50' E	
L5	150.00'	N 63°50' E	
L6	150.00'	N 63°50' E	
L7	150.00'	N 63°50' E	
L8	150.00'	N 63°50' E	
L9	150.00'	N 63°50' E	
L10	150.00'	N 63°50' E	
L11	150.00'	N 63°50' E	
L12	150.00'	N 63°50' E	
L13	150.00'	N 63°50' E	
L14	150.00'	N 63°50' E	
L15	150.00'	N 63°50' E	
L16	150.00'	N 63°50' E	
L17	150.00'	N 63°50' E	
L18	150.00'	N 63°50' E	
L19	150.00'	N 63°50' E	
L20	150.00'	N 63°50' E	
L21	150.00'	N 63°50' E	
L22	150.00'	N 63°50' E	
L23	150.00'	N 63°50' E	
L24	150.00'	N 63°50' E	
L25	150.00'	N 63°50' E	
L26	150.00'	N 63°50' E	
L27	150.00'	N 63°50' E	
L28	150.00'	N 63°50' E	
L29	150.00'	N 63°50' E	
L30	150.00'	N 63°50' E	
L31	150.00'	N 63°50' E	
L32	150.00'	N 63°50' E	
L33	150.00'	N 63°50' E	
L34	150.00'	N 63°50' E	
L35	150.00'	N 63°50' E	
L36	150.00'	N 63°50' E	
L37	150.00'	N 63°50' E	
L38	150.00'	N 63°50' E	
L39	150.00'	N 63°50' E	
L40	150.00'	N 63°50' E	
L41	150.00'	N 63°50' E	
L42	150.00'	N 63°50' E	
L43	150.00'	N 63°50' E	
L44	150.00'	N 63°50' E	
L45	150.00'	N 63°50' E	
L46	150.00'	N 63°50' E	
L47	150.00'	N 63°50' E	
L48	150.00'	N 63°50' E	
L49	150.00'	N 63°50' E	
L50	150.00'	N 63°50' E	
L51	150.00'	N 63°50' E	
L52	150.00'	N 63°50' E	
L53	150.00'	N 63°50' E	
L54	150.00'	N 63°50' E	
L55	150.00'	N 63°50' E	
L56	150.00'	N 63°50' E	
L57	150.00'	N 63°50' E	
L58	150.00'	N 63°50' E	
L59	150.00'	N 63°50' E	
L60	150.00'	N 63°50' E	
L61	150.00'	N 63°50' E	
L62	150.00'	N 63°50' E	
L63	150.00'	N 63°50' E	
L64	150.00'	N 63°50' E	
L65	150.00'	N 63°50' E	
L66	150.00'	N 63°50' E	
L67	150.00'	N 63°50' E	
L68	150.00'	N 63°50' E	
L69	150.00'	N 63°50' E	
L70	150.00'	N 63°50' E	
L71	150.00'	N 63°50' E	
L72	150.00'	N 63°50' E	
L73	150.00'	N 63°50' E	
L74	150.00'	N 63°50' E	
L75	150.00'	N 63°50' E	
L76	150.00'	N 63°50' E	
L77	150.00'	N 63°50' E	
L78	150.00'	N 63°50' E	
L79	150.00'	N 63°50' E	
L80	150.00'	N 63°50' E	
L81	150.00'	N 63°50' E	
L82	150.00'	N 63°50' E	
L83	150.00'	N 63°50' E	
L84	150.00'	N 63°50' E	
L85	150.00'	N 63°50' E	
L86	150.00'	N 63°50' E	
L87	150.00'	N 63°50' E	
L88	150.00'	N 63°50' E	
L89	150.00'	N 63°50' E	
L90	150.00'	N 63°50' E	
L91	150.00'	N 63°50' E	
L92	150.00'	N 63°50' E	
L93	150.00'	N 63°50' E	
L94	150.00'	N 63°50' E	
L95	150.00'	N 63°50' E	
L96	150.00'	N 63°50' E	
L97	150.00'	N 63°50' E	
L98	150.00'	N 63°50' E	
L99	150.00'	N 63°50' E	
L100	150.00'	N 63°50' E	

LEVEL OF FOCUS, INC.  
1154 EAST 1180 SOUTH  
SPRING FORK, UTAH 84660  
(801) 319-5441

**SURVEYOR'S CERTIFICATE**

BOUNDARY DESCRIPTION

ACCEPTANCE BY LEGISLATIVE BODY

DATE: 11-16-16

BY: [Signature]

DATE: 09-29-16

BY: [Signature]

UTAH COUNTY RECORDER

UTAH STATE PLANE COORDINATE SYSTEM

BASES OF BEGINNING = GENERAL BENCH

APPROVED AS TO FORM

DATE

ANNEXATION PLAT

COCOLALLA ANNEXATION

SCALE: 1" = 50 FEET UTAH COUNTY, UTAH

THIS FORM APPROVED BY UTAH COUNTY AND THE JURISDICTION THEREIN