

STATE OF UTAH

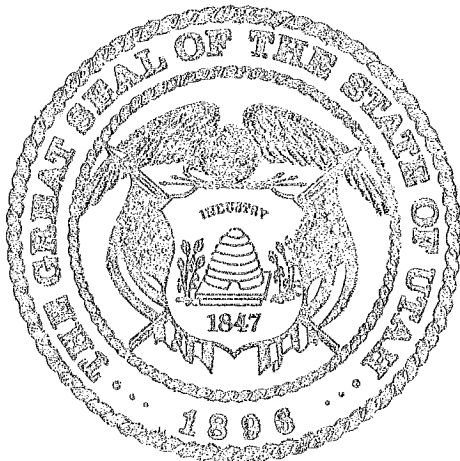


OFFICE OF THE LIEUTENANT GOVERNOR

CERTIFICATE OF ANNEXATION

I, SPENCER J. COX, LIEUTENANT GOVERNOR OF THE STATE OF UTAH, HEREBY CERTIFY THAT there has been filed in my office a notice of annexation from AMERICAN FORK CITY, dated February 28th, 2017, complying with Section 10-2-425, Utah Code Annotated, 1953, as amended.

NOW, THEREFORE, notice is hereby given to all whom it may concern that the attached is a true and correct copy of the notice of annexation, referred to above, on file with the Office of the Lieutenant Governor pertaining to AMERICAN FORK CITY, located in Utah County, State of Utah.



IN TESTIMONY WHEREOF, I have hereunto set my hand, and affixed the Great Seal of the State of Utah this 21st day of April, 2017 at Salt Lake City, Utah.

A handwritten signature in black ink, appearing to read "Spencer J. Cox".

SPENCER J. COX
Lieutenant Governor



51 East Main, American Fork, UT 84003
(801) 763-3000 Fax (801) 763-3033

*****NOTICE OF IMPENDING BOUNDARY ADJUSTMENT*****

April 10, 2017

Lt. Governor's Office
Utah State Capitol Complex
P.O. Box 142325
Salt Lake City, Utah 84114-2325

Emailed to: annexations@utah.gov

RE: Wen Hansen II Annexation into American Fork City

To Whom It May Concern:

At the February 28, 2017, City Council meeting, the Mayor and City Council adopted Ordinance No. 2017-02-06 which approved the Wen Hansen II Annexation into American Fork City.

Enclosed you will find a copy of our Ordinance of Annexation, which includes the boundary description of the annexation, and a copy of the annexation map. The above referenced annexation meets the requirements of annexation.

If approved, please send the Certificate of Annexation to:

American Fork City
Terilyn Lurker, City Recorder
51 East Main
American Fork, UT 84003

If you have any questions or need further information, please call me at 801-763-3000.

Sincerely,

Terilyn Lurker
City Recorder

enclosures

Mayor James H. Hadfield

Kevin Barnes, Carlton Bowen, Brad Frost, Robert Shelton, Jeff Shorter

AN ORDINANCE

AN ORDINANCE AMENDING SECTION 1.12.010 OF THE REVISED ORDINANCES OF AMERICAN FORK CITY 1985, AS AMENDED, ANNEXING CERTAIN PROPERTIES TO AMERICAN FORK CITY AND ESTABLISHING ZONING CLASSIFICATION FOR SAID PROPERTY.

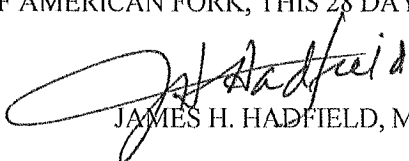
BE IT ORDAINED BY THE CITY COUNCIL OF AMERICAN FORK CITY, UTAH:

SECTION I. THAT THE FOLLOWING DESCRIBED REAL PROPERTY BE, AND THE SAME IS HEREBY ANNEXED TO AMERICAN FORK CITY, UTAH, THE CORPORATE LIMITS OF SAID CITY ARE HEREBY EXTENDED TO INCLUDE SAID DESCRIBED PROPERTY, AND SAID PROPERTY IS HEREBY DECLARED TO BE PART OF AMERICAN FORK CITY AND SHALL HENCEFORTH BE SUBJECT TO ALL OF THE ORDINANCES AND REGULATIONS THEREOF, AND THAT THE DESCRIPTION OF THE BOUNDARIES OF AMERICAN FORK CITY AS SET FORTH IN SECTION 1.12.010 OF THE REVISED ORDINANCES BE AMENDED TO INCLUDE THE FOLLOWING DESCRIBED PROPERTY TO-WIT:

ORDINANCE NO. 2017-02-06
WEN HANSEN II ANNEXATION (450 NORTH 1100 EAST)
SEE ATTACHMENT 'A'

SECTION II. THAT THE TERRITORY ANNEXED UNDER SECTION I ABOVE, IS HEREBY CLASSIFIED INTO THE R1-9,000 RESIDENTIAL ZONE AND SUBJECT TO THE TERMS AND CONDITIONS OF THE WEN HANSEN II ANNEXATION AGREEMENT AS PROVIDED IN ATTACHMENT 'B'.

SECTION III. THIS ORDINANCE SHALL TAKE EFFECT UPON ITS PASSAGE AND FIRST PUBLICATION. PASSED BY THE CITY COUNCIL OF AMERICAN FORK, THIS 28 DAY OF FEBRUARY, 2017.


JAMES H. HADFIELD, MAYOR



ATTEST:

STATE OF UTAH
COUNTY OF UTAH

I, TERILYN LURKER, CITY RECORDER OF AMERICAN FORK CITY, UTAH, DO HEREBY CERTIFY THE ABOVE AND FOREGOING TO BE A FULL, TRUE AND CORRECT COPY OF AN ORDINANCE AMENDING SECTION 1.12.010 OF THE REVISED ORDINANCES OF AMERICAN FORK CITY 1985, AMENDED, ANNEXING CERTAIN PROPERTIES TO AMERICAN FORK CITY AND ESTABLISHING ZONING CLASSIFICATION FOR SAID PROPERTY.

IN WITNESS WHEREOF, I HEREUNTO SET MY HAND AND AFFIX THE CORPORATE SEAL OF AMERICAN FORK, UTAH THIS 28 DAY OF FEBRUARY, 2017.


TERILYN LURKER, CITY RECORDER

ATTACHMENT "A"

SURVEYOR'S CERTIFICATE

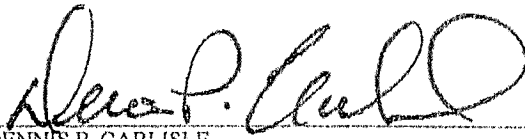
I, Dennis P. Carlisle, do hereby certify that I am a Professional Land Surveyor, and that I hold Certificate No 172675 in accordance with Title 58, Chapter 22 of Utah State Code. I further certify that this Plat is a true and accurate map of the tract of land to be annexed into American Fork, Utah, County of Utah.

BOUNDARY DESCRIPTION

A portion of the NW1/4 & the SW1/4 of Section 18, Township 5 South, Range 2 East, Salt Lake Base & Meridian, American Fork City, Utah County, State of Utah, more particularly described as follows:

Beginning at a point on the existing Corporate Limits of American Fork City located N0°24'54"W along the Section line 348.57 feet and East 1,121.14 feet from the West 1/4 Corner of Section 18, T5S, R2E, S.L.B. & M.; thence along said Corporate Limits the following 6 (six) courses and distances: North 453.09 feet; thence S89°59'23"E 53.68 feet; thence N0°00'27"E 367.13 feet; thence N89°46'47"E 1,056.88 feet; thence N0°13'13"W 131.20 feet; thence N89°46'47"E 439.78 feet to the 1/4 Section line and the westerly line of the Corporate Limits of Pleasant Grove City; thence S0°13'13"E along said Limits 1,116.10 feet; thence N89°36'00"W 167.71 feet; thence S0°18'00"W 214.16 feet to the Corporate Limits of American Fork City; thence along said Limits the following 6 (six) courses and distances: N89°58'13"W 311.38 feet; thence North 410.05 feet; thence N89°33'10"W 1,018.73 feet; thence N89°32'40"W 6.29 feet; thence S0°26'43"E 46.30 feet; thence N89°59'33"W 49.34 feet to the point of beginning.

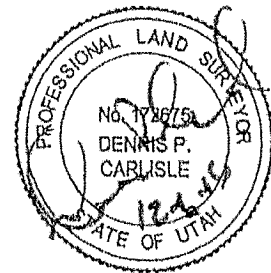
Contains: 32.47+/- acres



DENNIS P. CARLISLE
PROFESSIONAL LAND SURVEYOR
CERTIFICATE NO. 172675

DATE

DECEMBER 6, 2014



SURVEYOR'S SEAL

ACCEPTANCE BY COUNTY SURVEYOR

THIS PLAT HAS BEEN REVIEWED BY THE COUNTY SURVEYOR AND IS HEREBY CERTIFIED AS A FINAL LOCAL ENTITY, PURSUANT TO UTAH CODE ANNOTATED 17-23-20 AMENDED.

SURVEYOR'S CERTIFICATE

A portion of the NW 1/4 of Section 18, Township 5 South, Range 2 East, Salt Lake Base & Meridian, American Fork City, Utah, containing all or a portion of the land shown on the plat, is hereby certified as a final local entity plat. This plat was prepared by the County Surveyor, American Fork City, Utah, County of Utah.

BOUNDARY DESCRIPTION

A portion of the NW 1/4 of Section 18, Township 5 South, Range 2 East, Salt Lake Base & Meridian, American Fork City, Utah, containing all or a portion of the land shown on the plat, is hereby certified as a final local entity plat. This plat was prepared by the County Surveyor, American Fork City, Utah, County of Utah.

Wen Hansen II
 COUNTY SURVEYOR
 CERTIFICATE NO. 17295



Prepared on 7, 2017
 DATE

ACCEPTANCE BY COUNTY SURVEYOR

THIS PLAT HAS BEEN REVIEWED BY THE COUNTY SURVEYOR AND IS HEREBY CERTIFIED AS A FINAL LOCAL ENTITY PLAT, PURSUANT TO UTAH CODE ANNOTATED 17-23-30 ANNOTATED.

Wen Hansen II
 COUNTY SURVEYOR
 DATE 7, 2017



ACCEPTANCE OF LEGISLATIVE BODY

WE, THE DULY ELECTED COUNCIL OF THE CITY OF AMERICAN FORK, UTAH, HAVE RECEIVED A COPY OF THE ABOVE DESCRIBED PLAT AND HAVE REVIEWED THE SAME AND HAVE CONSENTED TO THE CITY AND COUNTY SURVEYOR'S CERTIFICATION OF THE PLAT AND CONTIGUOUS TO THE CITY AND COUNTY SURVEYOR'S CERTIFICATION OF THE PLAT AND HAVE CONDUCTED HEARINGS ON THE MATTER AND ADOPTED AN ORDINANCE PROVIDING FOR THE APPROVAL AND ACCEPTANCE OF THE PLAT AS AMENDED, AND (2) THAT THE COUNCIL DOES HEREBY APPROVE AND ACCEPT THE AMENDMENT OF THE TRACT OF LAND SHOWN HEREON AS PART OF AMERICAN FORK CITY, IN THE COUNTY OF UTAH, IN THE 2017 REGULAR SESSION.

DATED THIS 10 DAY OF February, 2017

Wen Hansen II
 Mayor
John J. ...
 City Clerk
Kim J. ...
 Council Member

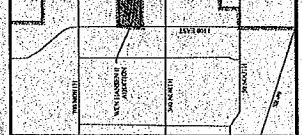
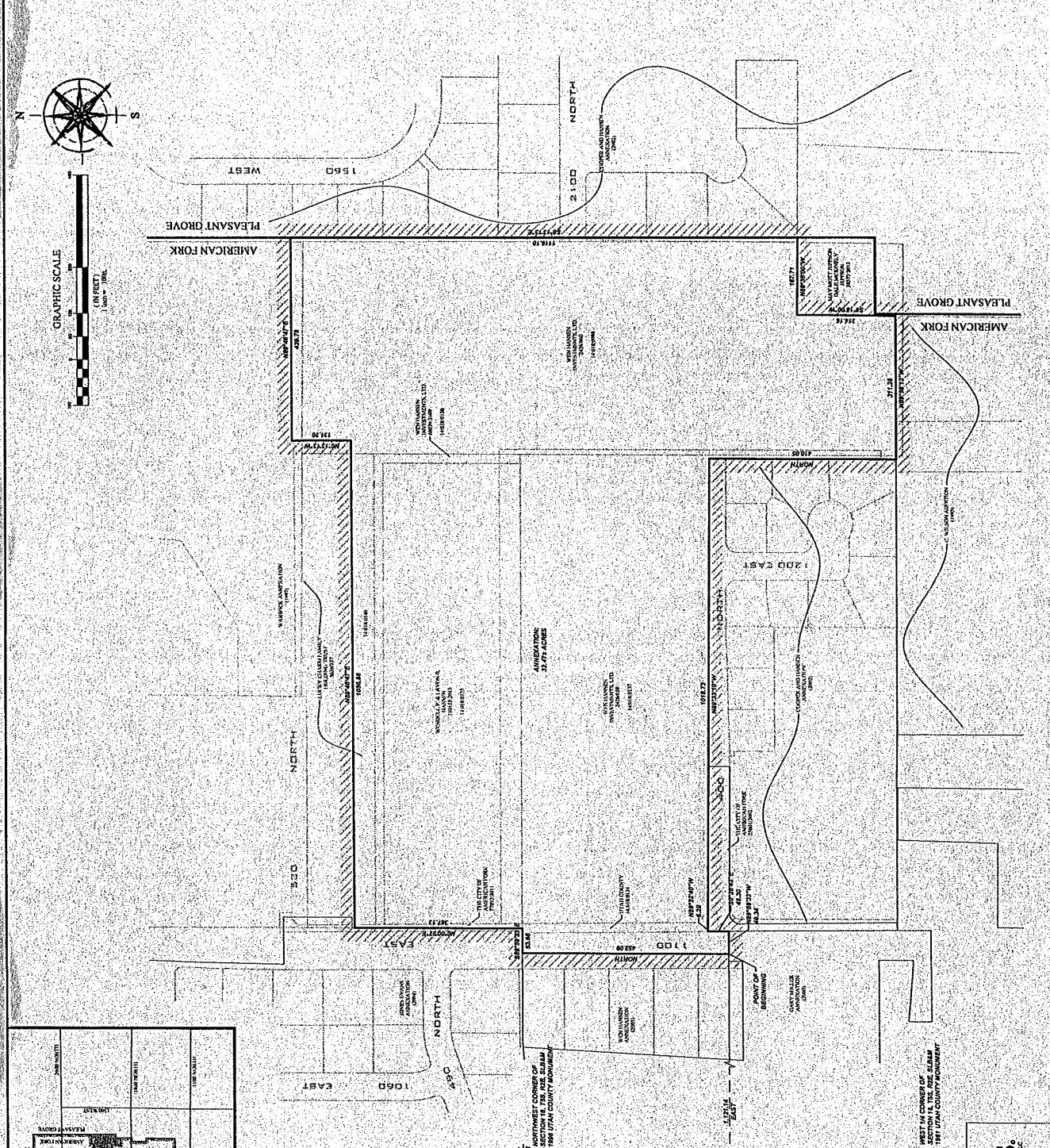


ATTY: *Wen Hansen II*
 RECORDER

FINAL LOCAL ENTITY PLAT

**WEN HANSEN II
 ADDITION**

LOCATED IN THE NW 1/4 & SW 1/4 OF SECTION 18, T5S, R2E, S18W, AMERICAN FORK CITY, UTAH COUNTY, STATE OF UTAH



VICINITY MAP

NORTHWEST CORNER OF SECTION 18, T5S, R2E, S18W, AMERICAN FORK CITY, UTAH COUNTY, STATE OF UTAH

(BASED ON BEARING: N071°17'11"W ALONG SECTION LINE - 144.0')

1200 EAST
 1200 WEST

1000 NORTH
 1100 NORTH
 1200 NORTH

1000 EAST
 1100 EAST
 1200 EAST

1000 WEST
 1100 WEST
 1200 WEST

1000 SOUTH
 1100 SOUTH
 1200 SOUTH

1000 NORTH
 1100 NORTH
 1200 NORTH

1000 EAST
 1100 EAST
 1200 EAST

1000 WEST
 1100 WEST
 1200 WEST



PLAT PREPARED BY
FOCUS
 SURVEYING & MAPPING
 1000 WEST 1000 SOUTH
 AMERICAN FORK, UTAH 84403

SECTION 18, T5S, R2E, S18W
 AMERICAN FORK CITY, UTAH COUNTY, STATE OF UTAH

SCALE: 1" = 40'

DATE: 7/10/17

BY: *Wen Hansen II*

CHECKED BY: *John J. ...*

DATE: 7/10/17

SCALE: 1" = 40'

DATE: 7/10/17

BY: *Wen Hansen II*

CHECKED BY: *John J. ...*

DATE: 7/10/17

SCALE: 1" = 40'

DATE: 7/10/17

BY: *Wen Hansen II*

CHECKED BY: *John J. ...*

DATE: 7/10/17

SCALE: 1" = 40'

DATE: 7/10/17

BY: *Wen Hansen II*

CHECKED BY: *John J. ...*

DATE: 7/10/17

SCALE: 1" = 40'

DATE: 7/10/17

BY: *Wen Hansen II*

CHECKED BY: *John J. ...*

DATE: 7/10/17

SCALE: 1" = 40'

DATE: 7/10/17

BY: *Wen Hansen II*

CHECKED BY: *John J. ...*

DATE: 7/10/17

SCALE: 1" = 40'

DATE: 7/10/17

BY: *Wen Hansen II*

CHECKED BY: *John J. ...*

DATE: 7/10/17

SCALE: 1" = 40'

DATE: 7/10/17

BY: *Wen Hansen II*

CHECKED BY: *John J. ...*

DATE: 7/10/17

SCALE: 1" = 40'

DATE: 7/10/17

BY: *Wen Hansen II*

CHECKED BY: *John J. ...*

DATE: 7/10/17

SCALE: 1" = 40'

DATE: 7/10/17

BY: *Wen Hansen II*

CHECKED BY: *John J. ...*

DATE: 7/10/17

SCALE: 1" = 40'

DATE: 7/10/17

BY: *Wen Hansen II*

CHECKED BY: *John J. ...*

DATE: 7/10/17

SCALE: 1" = 40'

DATE: 7/10/17

BY: *Wen Hansen II*

CHECKED BY: *John J. ...*

DATE: 7/10/17

SCALE: 1" = 40'

DATE: 7/10/17

BY: *Wen Hansen II*

CHECKED BY: *John J. ...*

DATE: 7/10/17

SCALE: 1" = 40'

DATE: 7/10/17

BY: *Wen Hansen II*

CHECKED BY: *John J. ...*

DATE: 7/10/17

SCALE: 1" = 40'

DATE: 7/10/17

BY: *Wen Hansen II*

CHECKED BY: *John J. ...*

DATE: 7/10/17

SCALE: 1" = 40'

DATE: 7/10/17

BY: *Wen Hansen II*

CHECKED BY: *John J. ...*

DATE: 7/10/17

SCALE: 1" = 40'

DATE: 7/10/17

BY: *Wen Hansen II*

CHECKED BY: *John J. ...*

DATE: 7/10/17

SCALE: 1" = 40'

DATE: 7/10/17

BY: *Wen Hansen II*

CHECKED BY: *John J. ...*

DATE: 7/10/17

SCALE: 1" = 40'

DATE: 7/10/17

BY: *Wen Hansen II*

CHECKED BY: *John J. ...*

DATE: 7/10/17

SCALE: 1" = 40'

DATE: 7/10/17

BY: *Wen Hansen II*

CHECKED BY: *John J. ...*

DATE: 7/10/17

SCALE: 1" = 40'

DATE: 7/10/17

BY: *Wen Hansen II*

CHECKED BY: *John J. ...*

DATE: 7/10/17

SCALE: 1" = 40'

DATE: 7/10/17

BY: *Wen Hansen II*

CHECKED BY: *John J. ...*

DATE: 7/10/17

SCALE: 1" = 40'

DATE: 7/10/17

BY: *Wen Hansen II*

CHECKED BY: *John J. ...*

DATE: 7/10/17

SCALE: 1" = 40'

DATE: 7/10/17

BY: *Wen Hansen II*

CHECKED BY: *John J. ...*

DATE: 7/10/17

SCALE: 1" = 40'

DATE: 7/10/17

BY: *Wen Hansen II*

CHECKED BY: *John J. ...*

DATE: 7/10/17

SCALE: 1" = 40'

DATE: 7/10/17

BY: *Wen Hansen II*

CHECKED BY: *John J. ...*

DATE: 7/10/17

SCALE: 1" = 40'

DATE: 7/10/17

BY: *Wen Hansen II*

CHECKED BY: *John J. ...*

DATE: 7/10/17

SCALE: 1" = 40'

DATE: 7/10/17

BY: *Wen Hansen II*

CHECKED BY: *John J. ...*

DATE: 7/10/17

SCALE: 1" = 40'

DATE: 7/10/17

BY: *Wen Hansen II*

CHECKED BY: *John J. ...*

DATE: 7/10/17

SCALE: 1" = 40'

DATE: 7/10/17

BY: *Wen Hansen II*

CHECKED BY: *John J. ...*

DATE: 7/10/17

SCALE: 1" = 40'

DATE: 7/10/17

BY: *Wen Hansen II*

CHECKED BY: *John J. ...*

DATE: 7/10/17

SCALE: 1" = 40'

DATE: 7/10/17

BY: *Wen Hansen II*

CHECKED BY: *John J. ...*

DATE: 7/10/17

SCALE: 1" = 40'

DATE: 7/10/17

BY: *Wen Hansen II*

CHECKED BY: *John J. ...*

DATE: 7/10/17

SCALE: 1" = 40'

DATE: 7/10/17

BY: *Wen Hansen II*

CHECKED BY: *John J. ...*

DATE: 7/10/17

SCALE: 1" = 40'

DATE: 7/10/17

BY: *Wen Hansen II*

CHECKED BY: *John J. ...*

DATE: 7/10/17

SCALE: 1" = 40'

DATE: 7/10/17

BY: *Wen Hansen II*

CHECKED BY: *John J. ...*

DATE: 7/10/17

SCALE: 1" = 40'

DATE: 7/10/17

BY: *Wen Hansen II*

CHECKED BY: *John J. ...*

DATE: 7/10/17

SCALE: 1" = 40'

DATE: 7/10/17

BY: *Wen Hansen II*

CHECKED BY: *John J. ...*

DATE: 7/10/17

SCALE: 1" = 40'

DATE: 7/10/17

BY: *Wen Hansen II*

CHECKED BY: *John J. ...*

DATE: 7/10/17

SCALE: 1" = 40'

DATE: 7/10/17

BY: *Wen Hansen II*

CHECKED BY: *John J. ...*

DATE: 7/10/17

SCALE: 1" = 40'

DATE: 7/10/17

BY: *Wen Hansen II*

CHECKED BY: *John J. ...*

DATE: 7/10/17