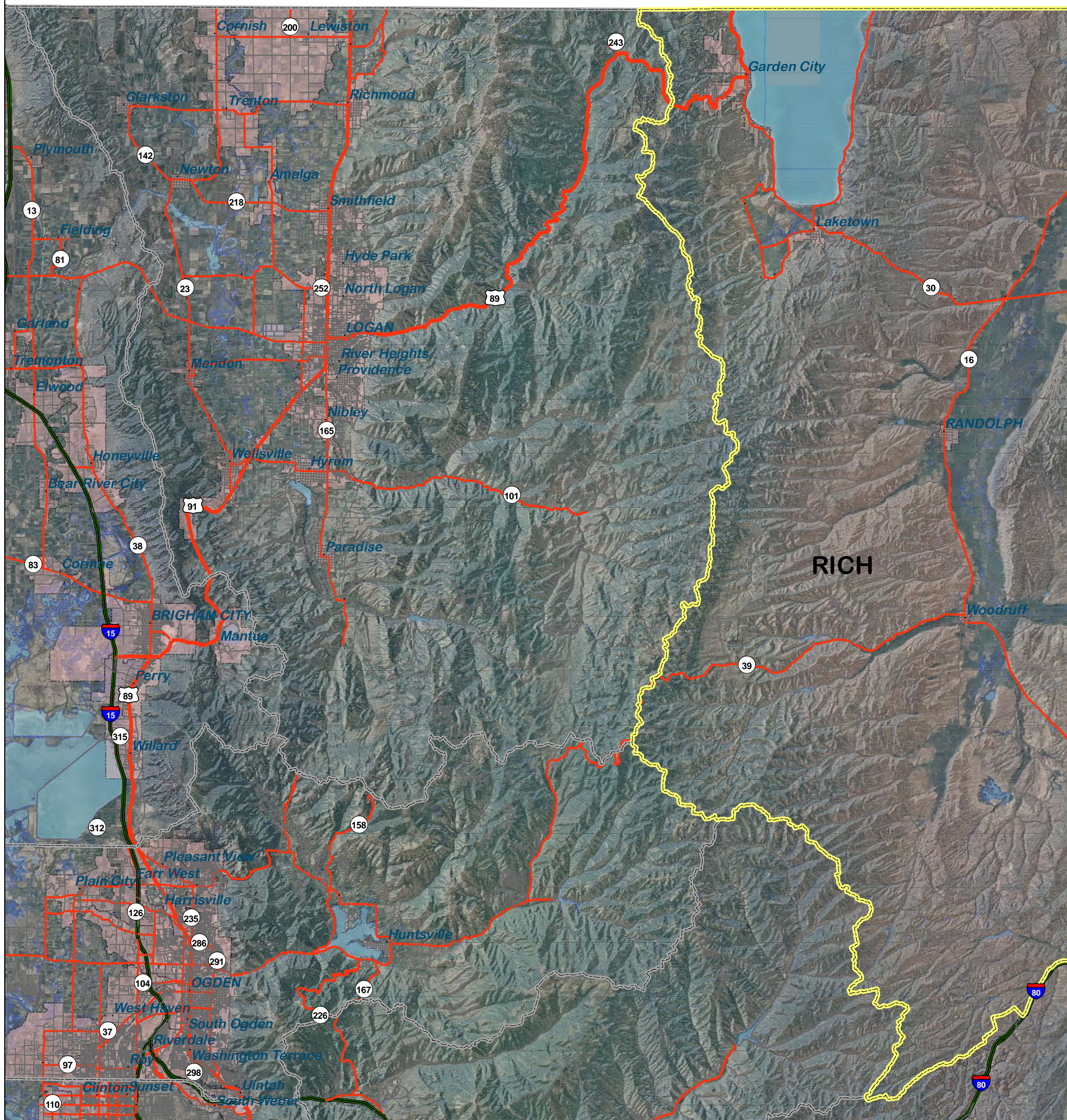
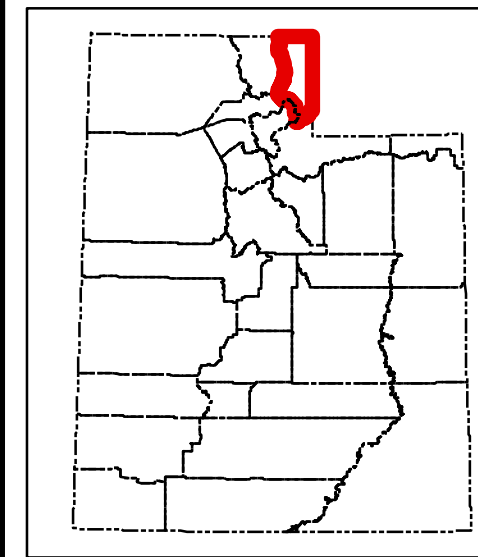


IDAHO



WYOMING

Location Map



Legend

- Selected County
- County Boundaries
- Municipalities
- Utah Streets & Roads**
- Freeway
- US Highway
- State Highway
- Local

Description

The geographic boundaries of Rich County are described as follows:
 Beginning at the point of intersection of the boundaries of Utah, Idaho and Wyoming, thence west to the summit of the watershed separating Cache and Bear Lake Valleys; thence southerly along the summit of said watershed to the summit of the Wasatch Range lying north and east of the headwaters of the Ogden River; thence southeasterly along the summit of the last mentioned range to, and thence along the summit of the mountains separating the valley of the Bear River from the valley of the Weber River to a point opposite and nearest to the Union Pacific Railroad, one mile east of Wasatch Station; thence southerly to the north side of said railroad; thence northeasterly along the north side of said railroad to the summit west of the Bear River Valley; thence east to the state boundary; thence north to the point of beginning.

Narrative

This map has been created to fulfill the requirements under Section 17-50-104, State of Utah Code: Counties of the state – County boundaries maintained by Lieutenant Governor. The counties of the state are those whose geographic boundaries are described in the official county boundary records maintained by the office of the lieutenant governor and may be changed only in accordance with the provisions of this title. The office of the lieutenant governor shall maintain the official county boundaries for the counties of the state and update those boundaries upon the lieutenant governor's issuance, under Section 67-1a-6.5, of an applicable certificate, as defined in that section. The county boundary described on this map has been created from the original county description. If changes have been made to the county boundary in accordance with the provisions outlined in state code, the changes are shown in the graphic representation of the boundary; the calls from the boundary adjustment plat have been added to the original description and a reference to the certification document points to the area of change. This map provides a general graphic location of the boundary without being tied to the ground using the Public Land Survey System. If more accurate information is needed, a ground survey is required.

Certification

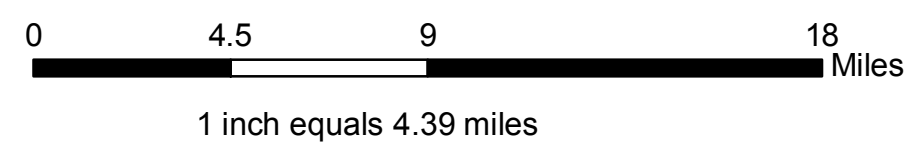
I Sean A. Fernandez, Professional Land Surveyor, as prescribed by the laws of the State of Utah and holding license No. 312775 do hereby certify: That this map was prepared by me or under my direction together with the best available data; That due care was exercised in preparing this map; That this map is a geographic representation of the County Boundary to the best of my knowledge and conviction.

DRAFT

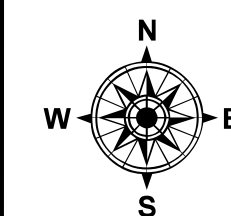
Greg Bell
 LIEUTENANT GOVERNOR

Utah State Capitol
 Suite 220
 Salt Lake City UT 84114

elections@utah.gov



Sean A. Fernandez PLS
 STATE CADASTRAL SURVEYOR
 Automated Geographic Reference Center (AGRC)
 1 State Office Building, Rm 5130
 Salt Lake City, Ut 84114
<http://gis.utah.gov/surveyresources>



Rich County Boundary Map

Drawn By: Mike Heagin Checked by: Sean Fernandez PLS

Print Date: May 5, 2010