

STATE OF UTAH

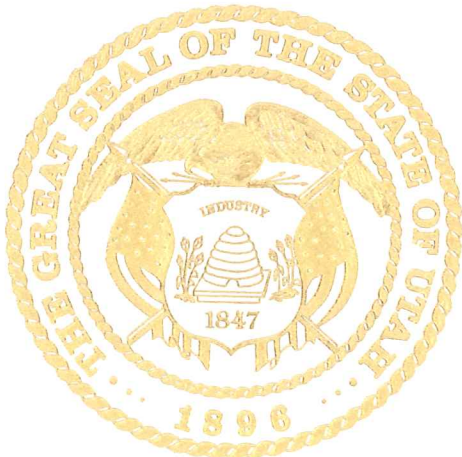


OFFICE OF THE LIEUTENANT GOVERNOR

CERTIFICATE OF ANNEXATION

I, GARY R. HERBERT, LIEUTENANT GOVERNOR OF THE STATE OF UTAH, HEREBY CERTIFY THAT there has been filed in my office a notice of annexation from the GRAND COUNTY SPECIAL SERVICE WATER DISTRICT, dated July 31st, 2008, complying with Section 17D-1-403, Utah Code Annotated, 1953, as amended.

NOW, THEREFORE, notice is hereby given to all whom it may concern that the attached is a true and correct copy of the notice of annexation, referred to above, on file with the Office of the Lieutenant Governor pertaining to the GRAND COUNTY SPECIAL SERVICE WATER DISTRICT, located in San Juan County, State of Utah.



IN TESTIMONY WHEREOF, I have hereunto set my hand and affixed the Great Seal of the State of Utah at Salt Lake City, this 13th day of October, 2008.


GARY R. HERBERT
Lieutenant Governor

Grand Water & Sewer Service Agency

3025 E Spanish Trail Rd
PO Box 1046
Moab, UT 84532
435-259-8121
435-259-8122 Fax

Mark Sovine
Manager/Operator

OPERATING COMMITTEE

Dan Pyatt (President)
Gary Wilson (V
President)
John Hartley
Mike Holyoak
Jerry McNeely
Rex Tanner

FORMING BOARDS:

SVW&SID

Gary Wilson (Ch)
Lance Christie (V.Ch)
John Hartley (Treas)
Mike Holyoak (Clerk)
Tom Stengel

GCWCD

Dan Pyatt (Ch)
Jerry McNeely (V.Ch)
Brian Backus
Rex Tanner

GCSSWD

Gary Wilson (Ch)
Lance Christie (V.Ch)
Kyle Bailey
Jerry McNeely
Tom Stengel

August 4, 2008

Office of the Lieutenant Governor
Attn: Danielle Murphy
PO Box 142220
Salt Lake City, UT 84114

Re: Annexation three San Juan County Parcels

Dear Danielle,

Enclosed please find a copy of the resolutions by the Grand County Water Conservancy District and the Grand County Special Service Water District and an aerial map of the annexed properties. If you have any questions or need any further information, please do not hesitate to call me at the number below.

Sincerely,



Dana Van Horn
Assistant to Manager/Operations
435-259-8121
gwssa.dana@frontiernet.net

Received

OCT 09 2008

Gary R. Herbert
Lieutenant Governor

**Grand County Special Service Water District
RESOLUTION 2008-07-31(b)**

WHEREAS, by petitions dated June 3, 2008, from Grand County Council and June 2, 2008 from the San Juan County Commission, to the Board of Trustees, Grand County Special Service Water District, the Board of Trustees was requested to annex into the District certain lands located in San Juan County, near Moab, Utah; and

WHEREAS, the lands that are proposed for annexation are more fully described as:

Parcel 1 (27S22E014200):

SECTION 1 T27S R22E SE ¼ NW ¼ (40 AC. M/L)

Parcel 2 (26S22E358402):

SECTION 35 T26S R22E: BEG. 2354.9 FT. W. & 660 FT. N. OF SE COR. SECTION 35 T26SR22E, TH W. 285.1 FT; TH N. 330 FT; TH E. 29.2 FT; TH S 37°54' E 418.3 FT. TO BEG (1.1 AC M/L)

Parcel 3 (26S22E358401):


SECTION 35 T26S R22E: BEG. 2099 FT. W. & 330 FT. N. OF SE COR. SECTION 35 T26S R22E, TH W. 541 FT; TH N. 330 FT; TH E. 285.1 FT; TH S 37°54'E 418.3 FT. TO BEG (3.12 AC. M/L)

WHEREAS, the Board of Trustees, after notice, held a public hearing on June 26, 2008 on the petition.

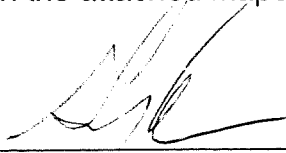
NOW THEREFORE, be it resolved as follows:

That the Board of Trustees of the Grand County Special Service Water District hereby approves the request to annex into the District the three parcels as described above and depicted on the attached maps.

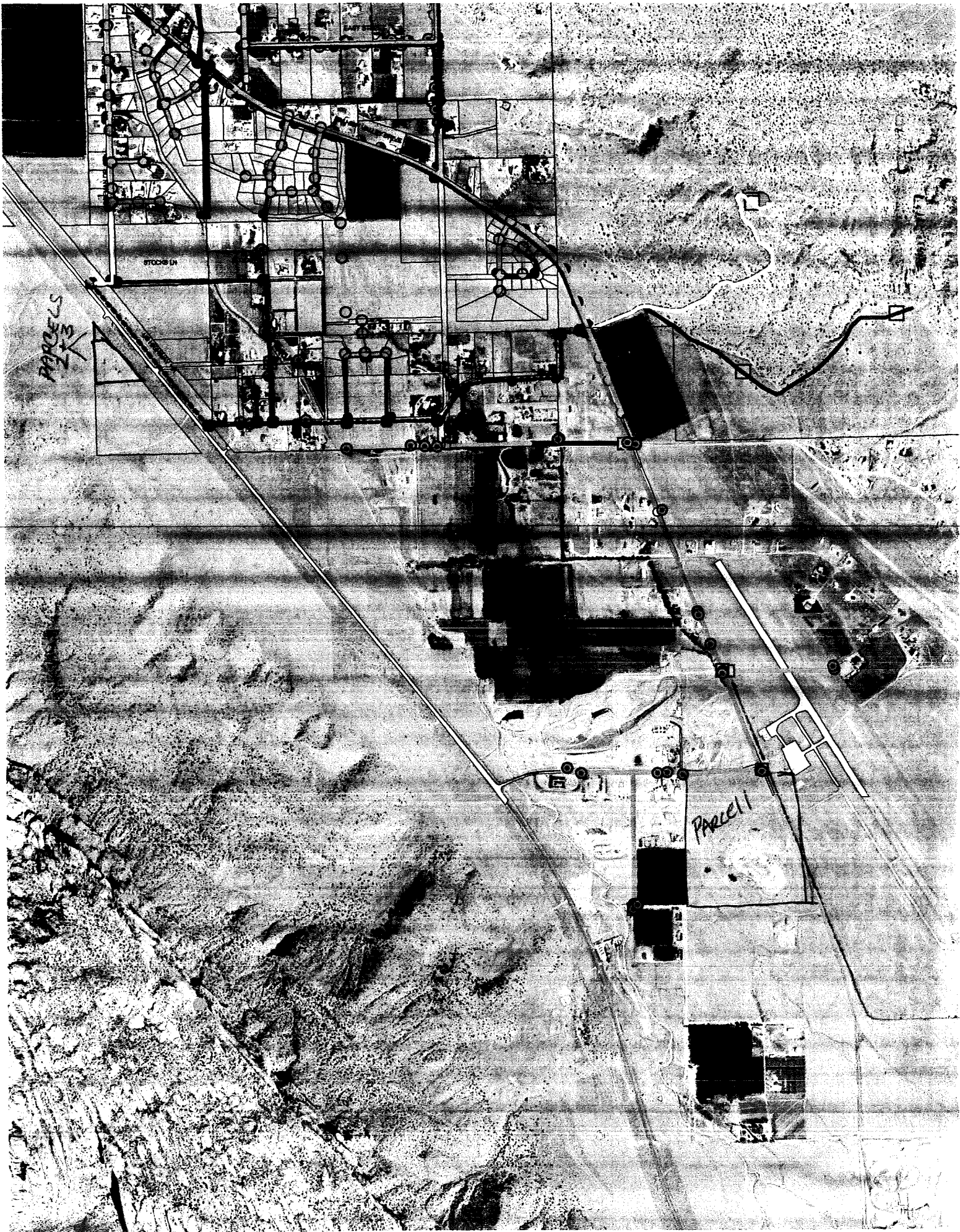
Passed and approved this 31st day of July 2008.



Lance Christie, Vice Chairman



Gary Wilson, Chairman



**A RECORD OF SURVEY &
ANNEXATION MAP OF LANDS TO THE
GRAND COUNTY SPECIAL SERVICE WATER DISTRICT AND THE
GRAND COUNTY WATER CONSERVANCY DISTRICT**

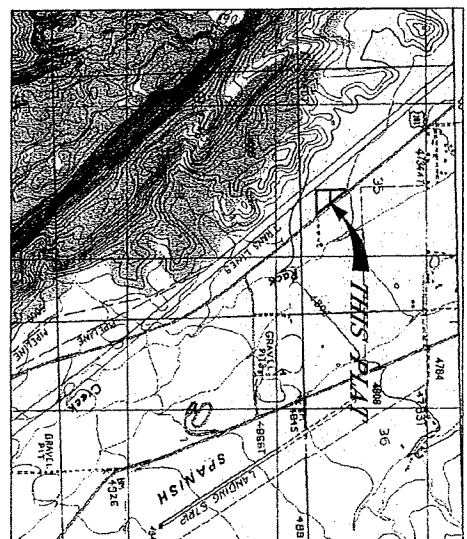
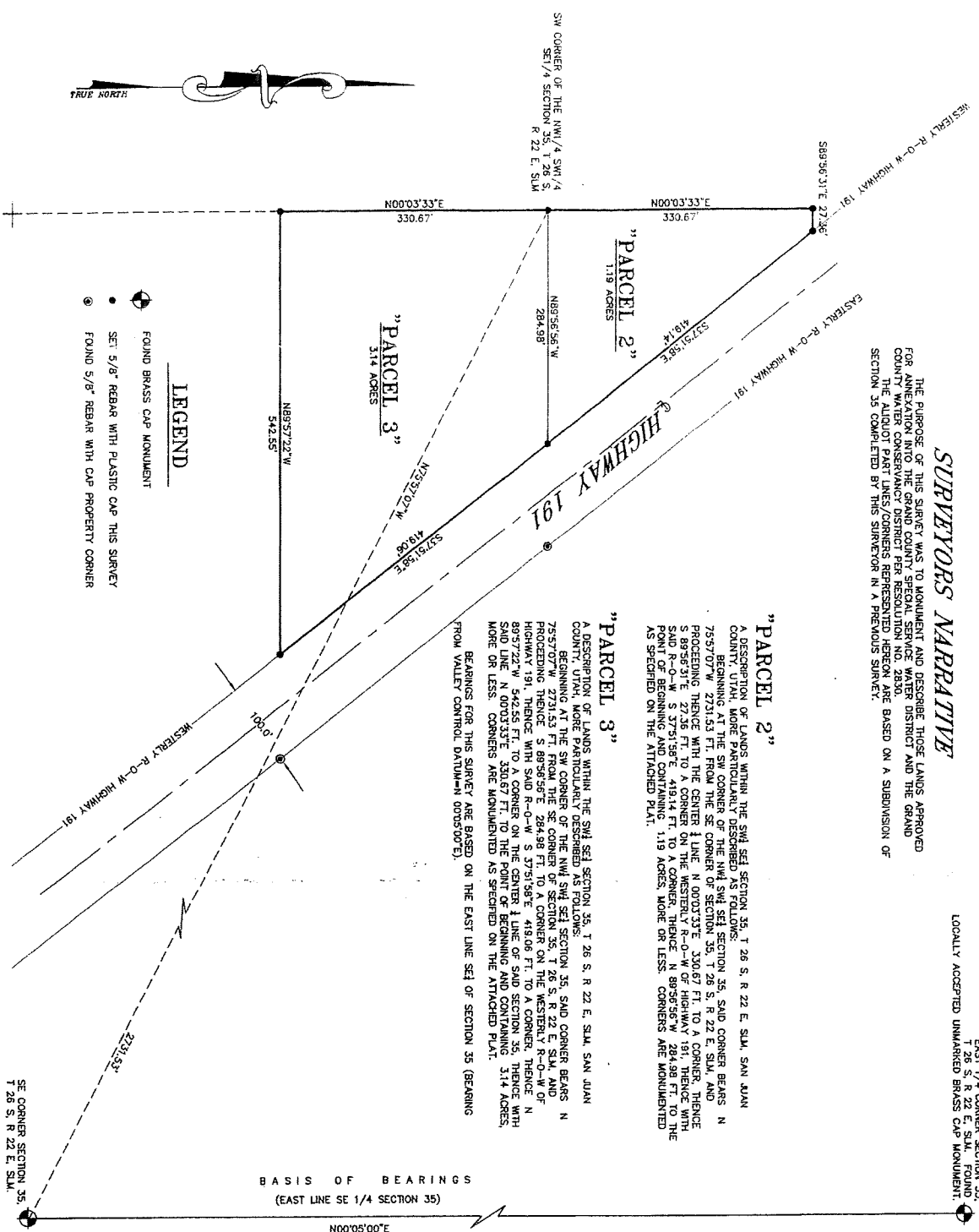
SURVEYORS NARRATIVE

THE PURPOSE OF THIS SURVEY WAS TO MONUMENT AND DESCRIBE THOSE LANDS APPROVED FOR ANNEXATION INTO THE GRAND COUNTY SPECIAL SERVICE WATER DISTRICT AND THE GRAND COUNTY WATER CONSERVANCY DISTRICT PER RESOLUTION NO. 2830. THE ALIQUOT PART LINES/CORNERS REPRESENTED HEREON ARE BASED ON A SUBDIVISION OF SECTION 35 COMPLETED BY THIS SURVEYOR IN A PREVIOUS SURVEY.

LOCALLY ACCEPTED UNMARKED BRASS CAP MONUMENT.
EAST 1/4 CORNER SECTION 35,
T 26 S, R 22 E, SLM, FOUND

"PARCEL 2"
A DESCRIPTION OF LANDS WITHIN THE SW 1/4 SECTION 35, T 26 S, R 22 E, SLM, SAN JUAN COUNTY, UTAH, MORE PARTICULARLY DESCRIBED AS FOLLOWS:
BEGINNING AT THE SW CORNER OF THE NW 1/4 SECTION 35, SAID CORNER BEARS N 75°57'07" W, 2731.53 FT. FROM THE SE CORNER OF SECTION 35, T 26 S, R 22 E, SLM, AND PROCEEDING THENCE S 89°56'56" E, 284.98 FT. TO A CORNER ON THE WESTERLY R-O-W OF HIGHWAY 191, THENCE WITH SAID R-O-W S 37°51'58" E, 419.06 FT. TO A CORNER, THENCE N 89°57'22" W, 542.55 FT. TO A CORNER ON THE CENTER LINE OF SAID SECTION 35, THENCE WITH SAID LINE N 00°03'33" E, 330.67 FT. TO THE POINT OF BEGINNING AND CONTAINING 1.19 ACRES, MORE OR LESS. CORNERS ARE MONUMENTED AS SPECIFIED ON THE ATTACHED PLAT.

"PARCEL 3"
A DESCRIPTION OF LANDS WITHIN THE SW 1/4 SECTION 35, T 26 S, R 22 E, SLM, SAN JUAN COUNTY, UTAH, MORE PARTICULARLY DESCRIBED AS FOLLOWS:
BEGINNING AT THE SW CORNER OF THE NW 1/4 SECTION 35, SAID CORNER BEARS N 75°57'07" W, 2731.53 FT. FROM THE SE CORNER OF SECTION 35, T 26 S, R 22 E, SLM, AND PROCEEDING THENCE S 89°56'56" E, 284.98 FT. TO A CORNER ON THE WESTERLY R-O-W OF HIGHWAY 191, THENCE WITH SAID R-O-W S 37°51'58" E, 419.06 FT. TO A CORNER, THENCE N 89°57'22" W, 542.55 FT. TO A CORNER ON THE CENTER LINE OF SAID SECTION 35, THENCE WITH SAID LINE N 00°03'33" E, 330.67 FT. TO THE POINT OF BEGINNING AND CONTAINING 3.14 ACRES, MORE OR LESS. CORNERS ARE MONUMENTED AS SPECIFIED ON THE ATTACHED PLAT.
BEARINGS FOR THIS SURVEY ARE BASED ON THE EAST LINE SE 1/4 SECTION 35 (BEARING FROM VALLEY CONTROL BRASSCAP MONUMENT 0805092 E).



APPROVED BY GRAND COUNTY

CHAIRMAN, GRAND COUNTY COUNCIL
Prina Caudill APPROVED
COUNTY CLERK
Allyne APPROVED
COUNTY ATTORNEY

SURVEYOR'S CERTIFICATE

I, **THOMAS M. KEOGH**, DO HEREBY CERTIFY THAT I AM A REGISTERED UTAH LAND SURVEYOR, AND THAT I HOLD CERTIFICATE NO. 171004 IN THE STATE OF UTAH, AND I FURTHER CERTIFY THAT I HAVE SURVEYED THOSE LANDS AS DEPICTED HEREON AND SAME IS TRUE AND CORRECT.

DATE: *Sept 16/08*
Thomas M. Keogh
THOMAS M. KEOGH
REGISTERED LAND SURVEYOR
STATE OF UTAH

PREPARED BY
KEOGH LAND SURVEYING
45 EAST CENTER STREET
MORGAN, UTAH 84052
DATE: SEPT. 8, 2008 DRAWN BY: TMK