

STATE OF UTAH

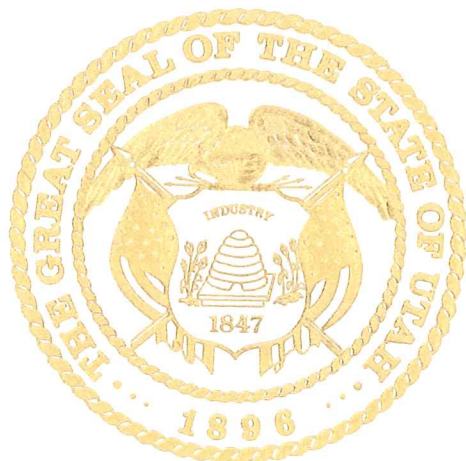


OFFICE OF THE LIEUTENANT GOVERNOR

CERTIFICATE OF ANNEXATION

I, GARY R. HERBERT, LIEUTENANT GOVERNOR OF THE STATE OF UTAH, HEREBY CERTIFY THAT there has been filed in my office a notice of annexation from LEHI CITY, dated August 26<sup>th</sup>, 2008, complying with Section 10-2-425, Utah Code Annotated, 1953, as amended.

NOW, THEREFORE, notice is hereby given to all whom it may concern that the attached is a true and correct copy of the notice of annexation, referred to above, on file with the Office of the Lieutenant Governor pertaining to LEHI CITY, located in Utah County, State of Utah.



IN TESTIMONY WHEREOF, I have hereunto set my hand, and affixed the Great Seal of the State of Utah this 30<sup>th</sup> day of August, 2008 at Salt Lake City, Utah.

Handwritten signature of Gary R. Herbert in black ink.

GARY R. HERBERT  
Lieutenant Governor

LEHI CITY  
PLANNING DEPT.  
99 WEST MAIN, STE. # 100  
LEHI, UTAH 84043

LEHI CITY

ENT 102205:2008 PG 1 of 3  
RANDALL A. COVINGTON  
UTAH COUNTY RECORDER  
2008 Sep 16 12:09 pm FEE 0.00 BY SW  
RECORDED FOR LEHI CITY CORPORATION

ORDINANCE NO. 07-08-08. 31

AN ORDINANCE APPROVING THE ANNEXATION OF  
THE HOLBROOK ANNEXATION TO LEHI CITY

<sup>1</sup>  
WHEREAS, the Lehi City Council has adopted a resolution of intent to annex real property known as the Holbrook Annexation, located between approximately 900 North and 3600 North and between approximately the Jordan River and Redwood Road and West of Redwood Road from about 1800 North to 4200 North and further identified by Exhibit "A" pursuant to the provisions of Section 10-2-418 of the Utah Code; and

WHEREAS, the Lehi City Council conducted a public hearing on the 8th day of July, 2008, after having published notice as also required by Section 10-2-418 of the Utah Code; and

WHEREAS, the Lehi City Council noted that there were no protests filed to defeat the annexation as required by Section 10-2-418 of the Utah Code.

NOW, THEREFORE, IT IS ORDAINED BY THE CITY COUNCIL OF LEHI CITY, UTAH, AS FOLLOWS:

Section 1. The Lehi City Council finds that the proposed annexation of the Holbrook Annexation as more fully described on the transparent reproducible Annexation Plat and the attached Exhibit "A", in the judgment of Lehi City, meets the standards set forth in Section 10-2-418 of the Utah Code.

Section 2. The area as specifically described in the Annexation Plat is hereby annexed to Lehi City, subject to compliance with the terms and provisions of the Annexation Agreement, a copy of which is attached hereto.

Section 3. Pursuant to Utah Code Ann. §10-9-406, the City Council hereby assigns the Commercial, Business Park, R-1-15, RA-1, R-1-8, R-2, R-3 and TH-5 zoning district designations to the territory depicted on the Annexation Plat which is being annexed to Lehi City by this ordinance, and further directs that the Official Zoning District Map of Lehi City be amended to show the area as part of Lehi City with the new zoning district designations.

Section 4. The City Recorder is hereby directed to file the transparent reproducible Annexation Plat, together with a certified copy of this ordinance in the office of the Utah County Recorder when all Provisions of the Annexation Agreement have been complied with which are conditions precedent to the Annexation.

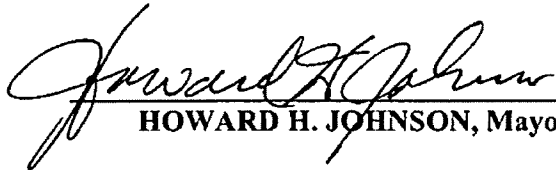
Received

SEP 29 2008

Gary R. Herbert  
Lieutenant Governor

Section 5. This ordinance shall become effective following subsequent publication as provided by law. However, this ordinance shall not become effective and the mayor shall not be authorized to sign the same until all conditions and requirements of the annexation agreement have been completed which were conditions precedent to the approval of this annexation.

PASSED AND ADOPTED by the Lehi City Council this 8<sup>th</sup> day of July, 2008.

  
HOWARD H. JOHNSON, Mayor

VOTING BY THE CITY COUNCIL:

ATTEST:   
CONNIE J. ASHTON, City Recorder  
Lehi City, Utah



# BOUNDARY DESCRIPTION

Beginning at the Northwest Corner of Section 2, Township 5 South, Range 1 West, Salt Lake Base and Meridian;

ENT 102205:2008 PG 3 of 3

thence North 89°59'56" East, a distance of 488.68 feet; thence South 89°59'59" East, a distance of 2,162.47 feet; thence North 00°10'35" East, a distance of 1,340.31 feet; thence continue northerly along said line, a distance of 1,327.33 feet; thence South 89°48'57" West, a distance of 1,209.89 feet; thence continue westerly along said line, a distance of 109.00 feet; thence North 00°12'45" East, a distance of 1,328.21 feet; thence North 89°25'24" East, a distance of 1,258.28 feet; thence North 89°27'33" East, a distance of 56.09 feet; thence South 89°54'16" East, a distance of 936.34 feet; thence North 57°36'31" East, a distance of 267.79 feet; thence South 32°23'29" East, a distance of 218.39 feet; thence South 24°13'40" East, a distance of 109.66 feet; thence South 31°18'15" East, a distance of 86.61 feet; thence South 40°57'02" East, a distance of 480.62 feet; thence South 34°07'17" East, a distance of 221.05 feet; thence South 43°20'11" East, a distance of 170.48 feet; thence South 41°47'16" East, a distance of 277.62 feet; thence South 32°59'38" East, a distance of 159.77 feet; thence South 25°56'32" East, a distance of 123.44 feet; thence South 31°14'12" East, a distance of 323.96 feet; thence South 35°31'13" East, a distance of 382.11 feet; thence North 87°58'47" East, a distance of 567.35 feet; thence South 16°18'10" East, a distance of 484.48 feet; thence South 30°54'00" East, a distance of 153.83 feet; thence South 01°45'12" East, a distance of 196.09 feet; thence South 13°32'46" East, a distance of 397.05 feet; thence South 45°41'40" East, a distance of 466.72 feet; thence South 88°35'29" East, a distance of 122.04 feet; thence South 01°00'18" West, a distance of 114.02 feet; thence South 45°58'46" East, a distance of 165.49 feet; thence South, a distance of 329.00 feet; thence East, a distance of 53.00 feet; thence South 00°07'31" East, a distance of 457.00 feet; thence South 59°34'27" East, a distance of 219.18 feet; thence South 50°27'41" East, a distance of 274.90 feet; thence South 89°30'25" East, a distance of 581.02 feet; thence South 35°16'03" East, a distance of 715.28 feet; thence South 16°21'04" East, a distance of 252.20 feet; thence North 67°23'15" East, a distance of 590.38 feet; thence North 61°38'55" East, a distance of 229.53 feet; thence North 63°26'06" East, a distance of 2.24 feet; thence South, a distance of 1.00 feet; thence South 18°26'06" East, a distance of 9.49 feet; thence South 42°56'10" East, a distance of 157.08 feet; thence South 40°48'08" East, a distance of 154.56 feet; thence South 33°38'25" East, a distance of 319.51 feet; thence South 50°11'40" East, a distance of 140.58 feet; thence South 28°11'52" East, a distance of 188.35 feet; thence South 01°30'43" West, a distance of 341.12 feet; thence South 16°53'24" West, a distance of 316.66 feet; thence South 11°32'48" West, a distance of 189.84 feet; thence South 02°24'30" East, a distance of 214.19 feet; thence South 13°04'32" West, a distance of 159.13 feet; thence South 22°27'25" West, a distance of 243.46 feet; thence North, a distance of 3.00 feet; thence South 51°17'16" West, a distance of 342.18 feet; thence South 55°23'09" West, a distance of 223.57 feet; thence South 67°33'26" West, a distance of 199.08 feet; thence South 16°04'25" West, a distance of 61.40 feet; thence South 51°12'12" East, a distance of 65.44 feet; thence South 20°25'02" West, a distance of 338.25 feet; thence South 17°10'19" West, a distance of 243.87 feet; thence South 48°58'09" West, a distance of 173.66 feet; thence South 51°18'31" West, a distance of 283.14 feet; thence South 36°43'27" West, a distance of 314.40 feet; thence West, a distance of 22.00 feet; thence South 28°13'25" West, a distance of 200.88 feet; thence South 01°48'31" West, a distance of 95.05 feet; thence South 87°58'09" East, a distance of 141.09 feet; thence South 83°12'40" East, a distance of 42.30 feet; thence North 57°43'28" East, a distance of 22.47 feet; thence South 89°37'49" East, a distance of 155.00 feet; thence East, a distance of 24.00 feet; thence South 00°53'13" East, a distance of 323.04 feet; thence South 88°38'46" East, a distance of 677.19 feet; thence North 00°09'31" West, a distance of 361.00 feet; thence East, a distance of 495.00 feet; thence South, a distance of 4.00 feet; thence East, a distance of 338.00 feet; thence South 00°30'33" East, a distance of 675.03 feet; thence North 89°33'33" East, a distance of 130.00 feet; thence South 00°31'15" East, a distance of 660.03 feet; thence North 89°28'16" East, a distance of 325.01 feet; thence South, a distance of 23.00 feet; thence South 88°49'22" East, a distance of 292.06 feet; thence South 88°40'04" East, a distance of 86.02 feet; thence East, a distance of 1.00 feet; thence South 00°46'33" East, a distance of 517.05 feet; thence South 88°50'20" East, a distance of 296.06 feet; thence East, a distance of 8.00 feet; thence South 00°24'33" East, a distance of 140.00 feet; thence West, a distance of 11.00 feet; thence North 88°18'19" West, a distance of 338.15 feet; thence South, a distance of 251.00 feet; thence East, a distance of 211.00 feet; thence South, a distance of 29.00 feet; thence East, a distance of 130.00 feet; thence continue easterly along said line, a distance of 11.00 feet; thence South 00°25'17" East, a distance of 272.01 feet; thence West, a distance of 350.00 feet; thence South 00°53'43" East, a distance of 128.02 feet; thence South 75°57'50" West, a distance of 4.12 feet; thence West, a distance of 16.00 feet; thence North 89°38'39" West, a distance of 322.01 feet; thence North 00°40'12" West, a distance of 171.01 feet; thence North 89°23'26" West, a distance of 658.04 feet; thence South 00°35'15" West, a distance of 195.01 feet; thence North 89°16'23" West, a distance of 394.03 feet; thence North 89°42'26" West, a distance of 783.01 feet; thence North 48°42'17" West, a distance of 98.49 feet; thence West, a distance of 4,407.00 feet; thence South 00°12'47" West, a distance of 538.00 feet; thence North 68°18'15" West, a distance of 705.38 feet; thence North 39°10'02" East, a distance of 214.87 feet; thence North 62°13'59" West, a distance of 432.66 feet; thence North 56°15'34" East, a distance of 974.64 feet; thence North 00°13'15" West, a distance of 1,944.69 feet; thence South 89°54'47" West, a distance of 1,190.29 feet; thence South 89°55'02" West, a distance of 200.62 feet; thence North 00°00'02" East, a distance of 664.11 feet; thence East, a distance of 200.50 feet; thence North 00°00'34" West, a distance of 664.40 feet; thence South 89°52'04" West, a distance of 600.87 feet; thence continue westerly along said line, a distance of 1,032.98 feet; thence South 11°53'43" East, a distance of 2.49 feet; thence West, a distance of 440.54 feet; thence South 34°07'53" West, a distance of 0.27 feet; thence West, a distance of 578.88 feet; thence North 00°04'50" West, a distance of 1,324.90 feet; thence North 89°49'08" East, a distance of 728.10 feet; thence North 12°01'12" West, a distance of 593.88 feet; thence South 77°58'46" West, a distance of 10.00 feet; thence South 12°01'10" East, a distance of 499.86 feet; thence South 89°49'08" West, a distance of 699.53 feet; thence South 89°54'33" West, a distance of 199.11 feet; thence North 00°04'03" East, a distance of 871.03 feet; thence North 22°23'35" West, a distance of 404.24 feet; thence South 89°53'09" West, a distance of 3,982.28 feet; thence North, a distance of 21.77 feet; thence West, a distance of 943.55 feet; thence North, a distance of 1,319.62 feet; thence East, a distance of 5,278.36 feet to the POINT OF BEGINNING.

Containing 79,740,063 square feet or 1,830.58 acres, more or less.



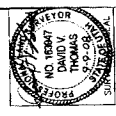
800

12'

BOUNDARY

**SURVEYOR'S CERTIFICATE**  
 I HEREBY CERTIFY THAT THIS IS A TRUE AND ACCURATE MAP OF THE TRACT OF LAND TO BE ANNEXED TO LEHI CITY, UTAH COUNTY, UTAH.

**BOUNDARY DESCRIPTION**  
 Commence at the Southeast Corner of Section 2, Township 2, South, Range 1, West, 1st Meridian, Utah, and follow the following course: ... (Detailed boundary description text follows) ...

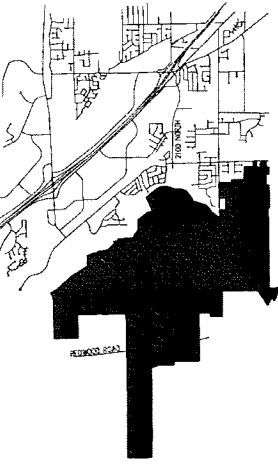
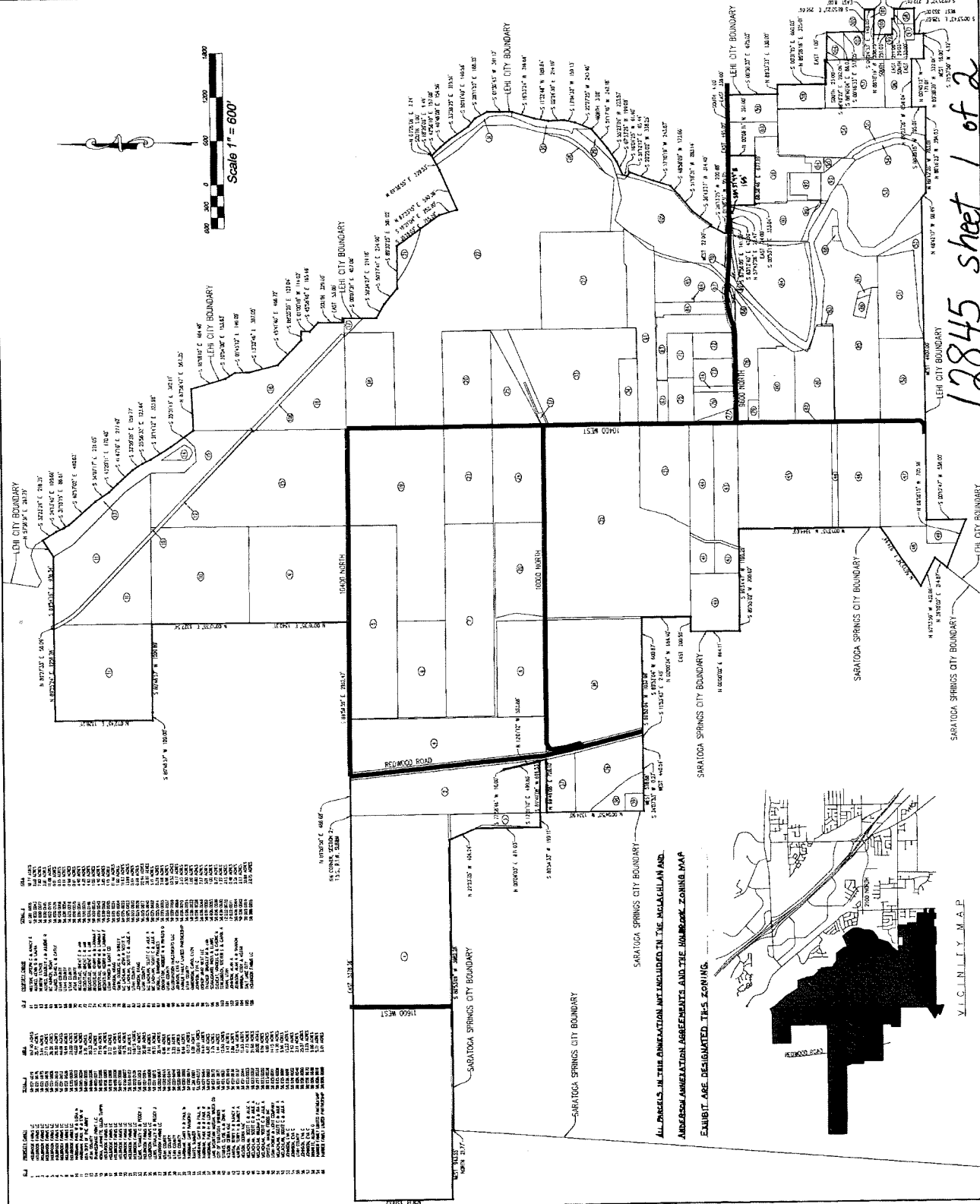
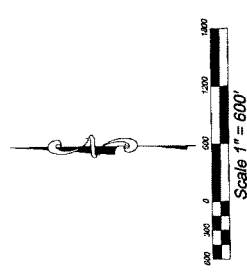


SURVEYOR  
 DAVID V. THOMAS  
 SEPT. 9, 2008  
 DATE

**ACCEPTANCE BY LEGISLATIVE BODY**  
 THIS IS TO CERTIFY THAT THE LEHI CITY COUNCIL HAS RECEIVED A RESOLUTION BY A MAJORITY OF THE MEMBERS OF THE CITY COUNCIL AUTHORIZING THE ANNEXATION OF THE TRACT OF LAND DESCRIBED HEREIN TO LEHI CITY, UTAH COUNTY, UTAH, IN ACCORDANCE WITH THE UTAH ANNEXATION COMMISSION ACT (UNCA) (U.C.A. 17-2-101 THROUGH 17-2-108), AND THAT THE CITY COUNCIL HAS ADOPTED THE RESOLUTION AND THE CITY CLERK HAS FILED THE RESOLUTION WITH THE UTAH ANNEXATION COMMISSION AS A PART OF SAID CITY AND THAT SAID TRACT IS TO BE ANNEXED TO LEHI CITY, UTAH COUNTY, UTAH, IN ACCORDANCE WITH THE UTAH ANNEXATION COMMISSION ACT (UNCA) (U.C.A. 17-2-101 THROUGH 17-2-108).  
 DATED THIS 9th DAY OF July 2008  
 Mayor: [Signature]  
 City Clerk: [Signature]  
 City Council Members: [Signatures]



**ANNEXATION PLAT**  
**HOLBROOK 1**  
 LEHI CITY  
 SCALE 1" = 600' FEET  
 UTAH COUNTY, UTAH  
 PAGE 1 OF 2



12845 sheet 1 of 2

ALL PARCELS IN THE ANNEXATION ARE INCLUDED IN THE MAGALGHAM AND ANDERSON ANNEXATION AGREEMENTS AND THE HOLBROOK ZONING MAP EXHIBIT ARE DESIGNATED. THIS ZONING.

