

STATE OF UTAH



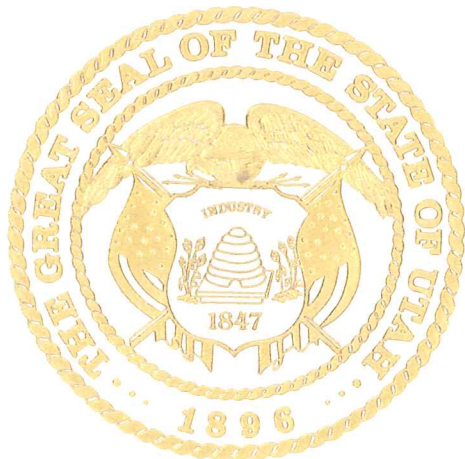
OFFICE OF THE LIEUTENANT GOVERNOR

CERTIFICATE OF BOUNDARY ADJUSTMENT

I, GARY R. HERBERT, LIEUTENANT GOVERNOR OF THE STATE OF UTAH, DO HEREBY CERTIFY THAT there has been filed in my office a certified copy of a boundary adjustment pertaining to the SANDY SUBURBAN IMPROVEMENT DISTRICT, dated February 12<sup>th</sup>, 2009, complying with Section 17B-2-516, Utah Code Annotated, 1953, as amended.

NOW, THEREFORE, notice is hereby given to all whom it may concern that the attached is a true and correct copy of the notices of boundary adjustment, referred to above, on file with the Office of the Lieutenant Governor pertaining to the SANDY SUBURBAN IMPROVEMENT DISTRICT, located in Salt Lake County, State of Utah.

IN TESTIMONY WHEREOF, I have hereunto set my hand and affixed the Great Seal of the State of Utah at Salt Lake City, this 3<sup>rd</sup> day of June, 2009.



  
GARY R. HERBERT  
Lieutenant Governor



*Sandy Suburban Improvement District*

8855 South 700 West ♦ Sandy, Utah 84070 ♦ Phone 801.561.7662 ♦ FAX 801.495.4076

May 27, 2009

The Honorable Gary Herbert  
Lieutenant Governor  
201 State Capitol  
Salt Lake City, Utah 84114

RE: Adjusting the Common Boundary Line Between Sandy Suburban Improvement District and Cottonwood Improvement District

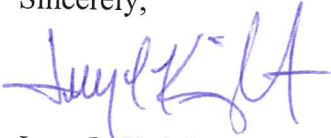
Dear Mr. Herbert:

On February 12, 2009, the Board of Trustees for the Sandy Suburban Improvement District adopted Resolution 09-02-12-01, approving the adjustment of a portion of the existing common boundary line between Sandy Suburban Improvement District and Cottonwood Improvement District. A copy of the resolution along with a map of the area being adjusted is enclosed for your reference and certification.

As provided in the State Statute, notice of the boundary adjustment has been given to the Salt Lake County Recorder along with the filing with the Utah State Tax Commission and the County Assessors Office.

If you have any questions, please call.

Sincerely,



Jerry L. Knight  
General Manager

enclosure

**Received**

**JUN 03 2009**

**Gary R. Herbert**  
Lieutenant Governor

**NOTICE OF BOUNDARY ADJUSTMENT OF THE  
SANDY SUBURBAN IMPROVEMENT DISTRICT**

The Honorable Gary Herbert  
Lieutenant Governor  
201 State Capitol  
Salt Lake City, UT 84114

Notice is hereby given that the Board of Trustees of the Sandy Suburban Improvement District of Salt Lake County has, on the 12<sup>th</sup> day of February, 2009, passed and adopted Resolution No. 09-02-12-01 (attached as Exhibit "A") approving a boundary adjustment between the Sandy Suburban Improvement District and the Cottonwood Improvement District (known as Sandy Surgery & Specialty Center), which adjustment is more particularly described in Exhibit 1 of the attached *RESOLUTION OF THE BOARD OF TRUSTEES OF THE SANDY SUBURBAN IMPROVEMENT DISTRICT APPROVING AND ADOPTING THE BOUNDARY ADJUSTMENT BETWEEN THE COTTONWOOD IMPROVEMENT DISTRICT AND THE SANDY SUBURBAN IMPROVEMENT DISTRICT*. An accurate map depicting the affected area or a legal description of the adjusted area is also attached as Exhibit "B." Request is hereby made that you file in the records of your office the attached Resolution and map evidencing the approved boundary adjustment. The Board of Trustees of the Sandy Suburban Improvement District hereby certifies that all requirements required by law for the boundary adjustment have been met with.

SUBMITTED on this 12<sup>th</sup> day of FEBRUARY, 2009.

ATTEST:

**SANDY SUBURBAN IMPROVEMENT  
DISTRICT**

Barbara D. Repasi  
Clerk

By: [Signature]  
Chairman, Board of Trustees

Sandy Surgery & Specialty Center/ Alta Hospital  
9450 S. 1300 E.

# **EXHIBIT “A”**

COPY

RESOLUTION NO. 09-02-12-01

10704767  
05/18/2009 11:13 AM #D-00  
Book - 9724 Pg - 304-307  
GARY W. OTT  
RECORDER, SALT LAKE COUNTY, UTAH  
SANDY SUBURBAN IMP. DISTRICT  
PO BOX 7 Sandy, UT 84091-0007  
SANDY SUBURBAN IMP. DISTRICT - MI 4 P.

By: Tmw

**RESOLUTION OF THE BOARD OF TRUSTEES OF THE SANDY SUBURBAN IMPROVEMENT DISTRICT APPROVING AND ADOPTING THE BOUNDARY ADJUSTMENT BETWEEN THE COTTONWOOD IMPROVEMENT DISTRICT AND THE SANDY SUBURBAN IMPROVEMENT DISTRICT**

WHEREAS, the Sandy Suburban Improvement District is a special district organized under the provisions of Utah law to provide wastewater treatment and collection services within the boundaries of the District; and

WHEREAS, the District adopted Resolution No. 09-01-08-01 initiating proceedings to adjust the boundaries of the Sandy Suburban Improvement District (the "District") with the Cottonwood Suburban Improvement District ("Cottonwood"); and

WHEREAS, the Board of Trustees of the District held a public hearing on February 12, 2009 at 4:45 p.m. at the offices of the District to receive public comment with respect to the proposed boundary adjustment as required by §17B-1-417 *Utah Code*; and

WHEREAS, the District has completed all proceedings, given all required notices, and received all public comments as required by law; and

WHEREAS, no protests were filed with the District to the proposed boundary adjustment with Cottonwood.

NOW, THEREFORE, be it resolved by the Board of Trustees of the Sandy Suburban Improvement District that:

The proposed boundary adjustment with the Cottonwood Improvement District is hereby approved and adopted contingent only on the adoption of a concurrent resolution by the Board of Trustees of the Cottonwood Improvement District; that the parcels of land designated on Exhibit "1" are hereby disconnected from the Cottonwood Improvement District and are to be included within the boundaries of the Sandy Suburban Improvement District.

The General Manager of the District is hereby authorized to execute all notices and record all documents required by law to implement the boundary adjustment authorized by this Resolution.

(Signatures on following page)

Sandy Surgery & Specialty Center / Alta Hospital  
9450 S. 1300 E.

DATED this 12<sup>th</sup> day of FEBRUARY, 2009.

SANDY SUBURBAN IMPROVEMENT DISTRICT  
BOARD OF TRUSTEES

ATTEST:

Carleen S. Repucci  
Clerk

By: Jerry E. Simons  
JERRY E. SIMONS, BOARD CHAIRMAN



# **EXHIBIT “1”**

COPYRIGHT  
 2008 BY MERIDIAN  
 ENGINEERING, INC.  
 ALL RIGHTS RESERVED.  
 NO PART OF THIS DOCUMENT  
 MAY BE REPRODUCED OR  
 TRANSMITTED IN ANY FORM  
 OR BY ANY MEANS, ELECTRONIC  
 OR MECHANICAL, INCLUDING  
 PHOTOCOPYING, RECORDING,  
 OR BY ANY INFORMATION  
 STORAGE AND RETRIEVAL  
 SYSTEM, WITHOUT PERMISSION  
 IN WRITING FROM  
 MERIDIAN ENGINEERING, INC.



**Architectural NEXUS, Inc.**  
 2150 South 1300 East, Suite 200  
 Salt Lake City, Utah 84106

**SANDY SURGERY & SPECIALTY CENTER**

TRANSFER AREA

COMP. FILE Exhibit
PROJECT NO. 07091
SHEET NO. 1 OF 1

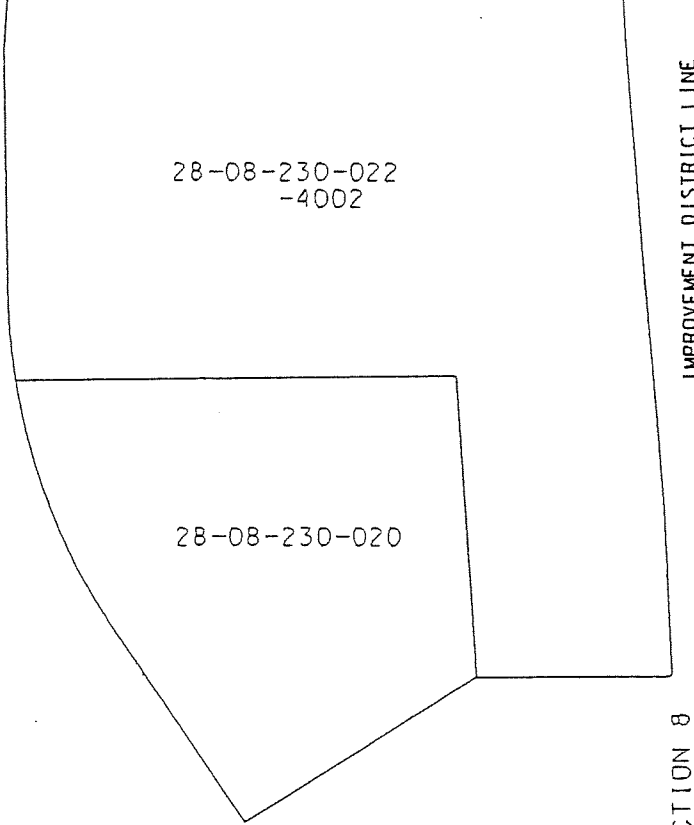
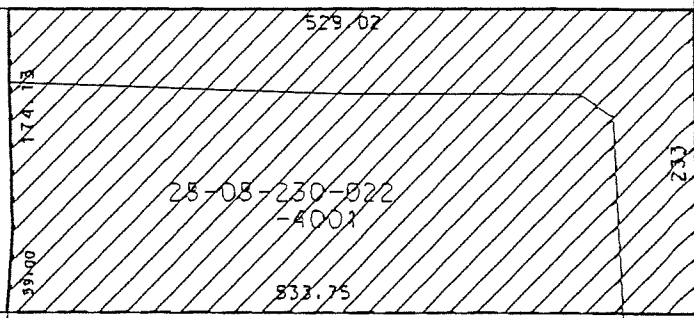
NORTH LINE OF SECTION 8

T3S R1E

COTTONWOOD IMPROVEMENT DISTRICT

IMPROVEMENT DISTRICT LINE

SANDY SUBURBAN IMPROVEMENT DISTRICT



IMPROVEMENT DISTRICT LINE

EAST LINE OF SECTION 8

T3S R1E

**Boundary Description**  
 An area of land situate in the NE ¼NE ¼ of Section 8, Township 3 South, Range 1 East, Salt Lake Base and Meridian. The boundary of said area is described as follows: Beginning at the Northeast corner of said Section 8; thence S 0°14'35" E (ARP) 233 ft along the East line of said Section 8, to a point in the Cottonwood and Sandy Suburban Improvement District boundary line; thence N 89°21'10" W 533.75 ft along said Improvement District boundary line to a point in a boundary line as described in a Quit-Claim deed to IHC Hospitals, Inc. in Book 6002 at Page 928 as Entry Number 4583397; thence northerly along said boundary line and it's extension the following two courses: (1) N 4°30'28" E 59.00 ft (2) N 0°17'52" W 174.13 ft to the North line of said Section 8; thence S 89°21'10" E 529.02 ft along said North line to the point of beginning. Contains 123,368 sq.ft. more or less.



# **EXHIBIT “B”**

COPYRIGHT  
 ALL RIGHTS RESERVED.  
 THIS DOCUMENT IS THE PROPERTY OF MERIDIAN ENGINEERING, INC. AND IS TO BE USED ONLY FOR THE PROJECT AND SITE SPECIFICALLY IDENTIFIED HEREIN. ANY REPRODUCTION OR TRANSMISSION OF THIS DOCUMENT IN ANY FORM OR BY ANY MEANS WITHOUT THE WRITTEN PERMISSION OF MERIDIAN ENGINEERING, INC. IS PROHIBITED.



**Architectural NEXUS, Inc.**  
 2150 South 1300 East, Suite 200  
 Salt Lake City, Utah 84106

**SANDY SURGERY & SPECIALTY CENTER**  
 TRANSFER AREA

COMP. FILE Exhibit
PROJECT NO. 07091
SHEET NO. 1 OF 1

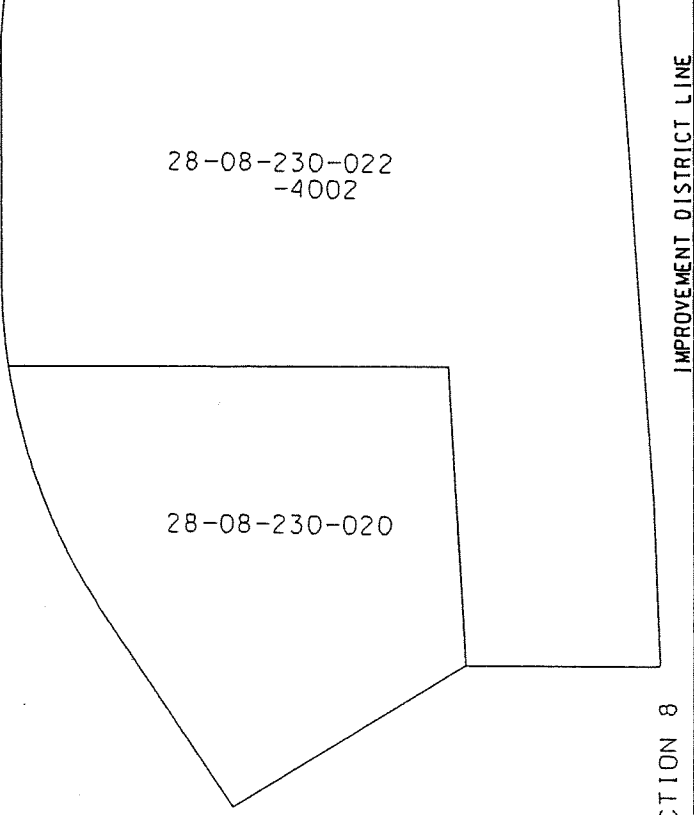
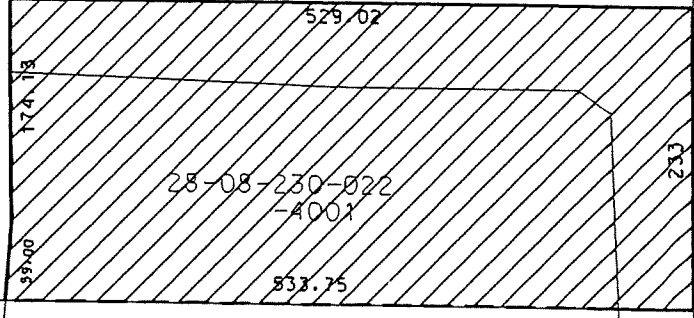
NORTH LINE OF SECTION 8

T3S R1E

COTTONWOOD IMPROVEMENT DISTRICT

IMPROVEMENT DISTRICT LINE

SANDY SUBURBAN IMPROVEMENT DISTRICT



EAST LINE OF SECTION 8

T3S R1E

**Boundary Description**

An area of land situate in the NE ¼NE ¼ of Section 8, Township 3 South, Range 1 East, Salt Lake Base and Meridian. The boundary of said area is described as follows: Beginning at the Northeast corner of said Section 8; thence S 0°14'35" E (ARP) 233 ft along the East line of said Section 8, to a point in the Cottonwood and Sandy Suburban Improvement District boundary line; thence N 89°21'10" W 533.75 ft along said Improvement District boundary line to a point in a boundary line as described in a Quit-Claim deed to IHC Hospitals, Inc. in Book 6002 at Page 928 as Entry Number 4583397; thence northerly along said boundary line and it's extension the following two courses; (1) N 4°30'28" E 59.00 ft (2) N 0°17'52" W 174.13 ft to the North line of said Section 8; thence S 89°21'10" E 529.02 ft along said North line to the point of beginning. Contains 123,368 sq.ft. more or less.