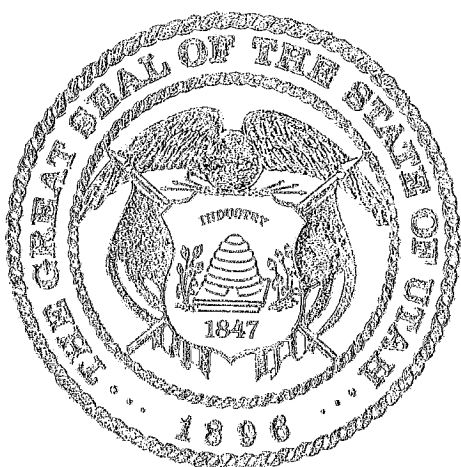


OFFICE OF THE LIEUTENANT GOVERNOR

CERTIFICATE OF ANNEXATION

I, SPENCER J. COX, LIEUTENANT GOVERNOR OF THE STATE OF UTAH, HEREBY CERTIFY THAT there has been filed in my office a notice of annexation from SPANISH FORK CITY, dated March 17th, 2015, complying with Section 10-2-425, Utah Code Annotated, 1953, as amended.

NOW, THEREFORE, notice is hereby given to all whom it may concern that the attached is a true and correct copy of the notice of annexation, referred to above, on file with the Office of the Lieutenant Governor pertaining to SPANISH FORK CITY, located in Utah County, State of Utah.



IN TESTIMONY WHEREOF, I have hereunto set my hand, and affixed the Great Seal of the State of Utah this 8th day of May, 2015 at Salt Lake City, Utah.

A handwritten signature in black ink, appearing to read "Spencer J. Cox", is written over a horizontal line.

SPENCER J. COX
Lieutenant Governor



May 1, 2015

RE: DEVANEY ANNEXATION COVER LETTER

To Whom It May Concern:

This is to inform you that Spanish Fork City has reviewed the Devaney Annexation Plat and verifies that all requirements of the city have been met.

If you have any questions please feel free to contact me using the information provided below.

Sincerely,

A handwritten signature in cursive script that reads "Kimberly Brenneman".

Kimberly Brenneman
Community Development Division Secretary
Business License Specialist
Spanish Fork City
O 801.804.4580
kbrenneman@spanishfork.org
www.spanishfork.org



ORDINANCE No. A01-15

ROLL CALL

VOTING	YES	NO
STEVE LEIFSON <i>Mayor (votes only in case of tie)</i>	ABSENT	
ROD DART <i>Council member</i>	X	
RICHARD M. DAVIS <i>Council member</i>	ABSENT	
BRANDON B. GORDON <i>Council member</i>	X	
MIKE MENDENHALL <i>Council member</i>	X	
KEIR A. SCUBES <i>Council member</i>	X	

I MOVE this ordinance be adopted: Council member Scoubes
I SECOND the foregoing motion: Council member Mendenhall

ORDINANCE No. A01-15

AN ORDINANCE ANNEXING PROPERTY KNOWN AS THE DEVANEY ANNEXATION

WHEREAS, a petition has been filed with the Spanish Fork City Council by the majority of the owners representing over 1/3 of the assessed valuation of real property hereinafter described, which property lies contiguous to the corporate limits of Spanish Fork City; and

WHEREAS, the petitioners have also submitted an accurate plat of said territory and have filed the same in the office of the Spanish Fork City Recorder; and

WHEREAS, the Spanish Fork City Recorder has certified that the petition complies with the requirements of Utah Code Annotated §10-2-402 (1953 as amended), as they pertain to the annexation; and

WHEREAS, Spanish Fork City has accepted the petition and certified it to the Utah County Commission pursuant to Utah Code Ann. §10-2-405 on the 19th day of December, 2014; and

WHEREAS, publication of the certification took place in the Daily Herald, a paper with local circulation in Spanish Fork City on the days of December 20, 2014, December 27, 2014, and January 3, 2015; and

WHEREAS, Spanish Fork City has studied the impact this annexation would have on the City, including utility impacts, infrastructure, and transportation; and

WHEREAS, no timely protests were received concerning the annexation petition; and

WHEREAS, a public hearing was held before the Spanish Fork City Council on the 17th day of March, 2015, pursuant to Utah Code Ann. §10-2-407, with notice having taken place in accordance with said section; and

WHEREAS, at the public hearing no objection to the annexation was voiced; and

WHEREAS, the property petitioned for annexation is undeveloped, and has development phases consistent with the Spanish Fork City Comprehensive General Plan;

NOW THEREFORE, be it ordained and enacted by the Spanish Fork City Council as follows:

I.

The boundaries of Spanish Fork City are hereby extended so as to include and incorporate within the said City limits the following real property located in Utah County:

BEGINNING AT A POINT LOCATED ON THE EXISTING BOUNDARY LINE OF SPANISH FORK CITY RECORDED JULY 01, 2011, WHICH IS, N00°27'57"W ALONG THE SECTION LINE 279.20 FEET AND WEST 2512.63 FEET FROM THE EAST QUARTER CORNER OF SECTION 13, TOWNSHIP 8 SOUTH RANGE 2 EAST, SALT LAKE BASE AND MERIDIAN; THENCE S01°40'11"E 1600.20 FEET; THENCE S46°42'01"W 1426.78 FEET; THENCE N61°45'00"W 323.25 FEET; THENCE N61°45'00"W

296.50 FEET; THENCE N62°30'00"W 117.48 FEET; THENCE N51°15'00"W 69.96 FEET; THENCE N27°15'00"W 36.30 FEET; THENCE N55°00'00"W 14.25 FEET; THENCE N00°43'49"E 40.88 FEET; THENCE N27°31'54"W 116.23 FEET; THENCE N27°33'20"W 311.27 FEET; THENCE N40°57'11"W 30.82 FEET; THENCE N54°33'53"W 44.49 FEET; THENCE N54°08'14"W 291.25 FEET; THENCE N47°37'24"W 66.60 FEET; THENCE N46°24'47"W 198.10 FEET; THENCE N45°26'53"W 424.24 FEET; THENCE N33°40'49"W 89.62 FEET; THENCE N27°02'22"W 140.17 FEET; THENCE N21°55'57"W 109.20 FEET; THENCE N16°20'08"W 399.46 FEET TO THE RR RIGHT-OF-WAY; THENCE ALONG SAID RIGHT-OF-WAY THE FOLLOWING (3) COARSE; THENCE N54°21'05"E 447.78 FEET; THENCE N53°00'00"E 42.90 FEET; THENCE N41°25'37"E 86.72 FEET THE EXISTING BOUNDARY LINE OF SPANISH FORK CITY RECORDED JULY 01, 2011; THENCE ALONG SAID BOUNDARY LINE THE FOLLOWING (4) COARSE; THENCE S89°30'00"E 838.57 FEET; THENCE N00°35'00"E 10.61 FEET; THENCE S89°34'08"E 1447.49 FEET; THENCE S89°49'01"E 234.39 FEET TO THE POINT OF BEGINNING. CONTAINING: 125.88 ACRES

II.

The property is hereby zoned Industrial and R-R, Rural Residential, as shown on the attached map, Exhibit A.

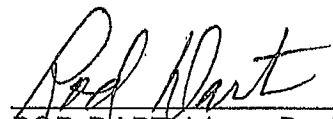
III.

This Ordinance shall not become part of the Spanish Fork City Municipal Code.

IV.

This Ordinance shall become effective immediately upon publication.

PASSED AND ORDERED PUBLISHED BY THE SPANISH FORK CITY COUNCIL OF SPANISH FORK, UTAH, this 17th day of March, 2015.



ROD DART, Mayor Pro Tem

Attest:



Kent R. Clark, Recorder



EXHIBIT A

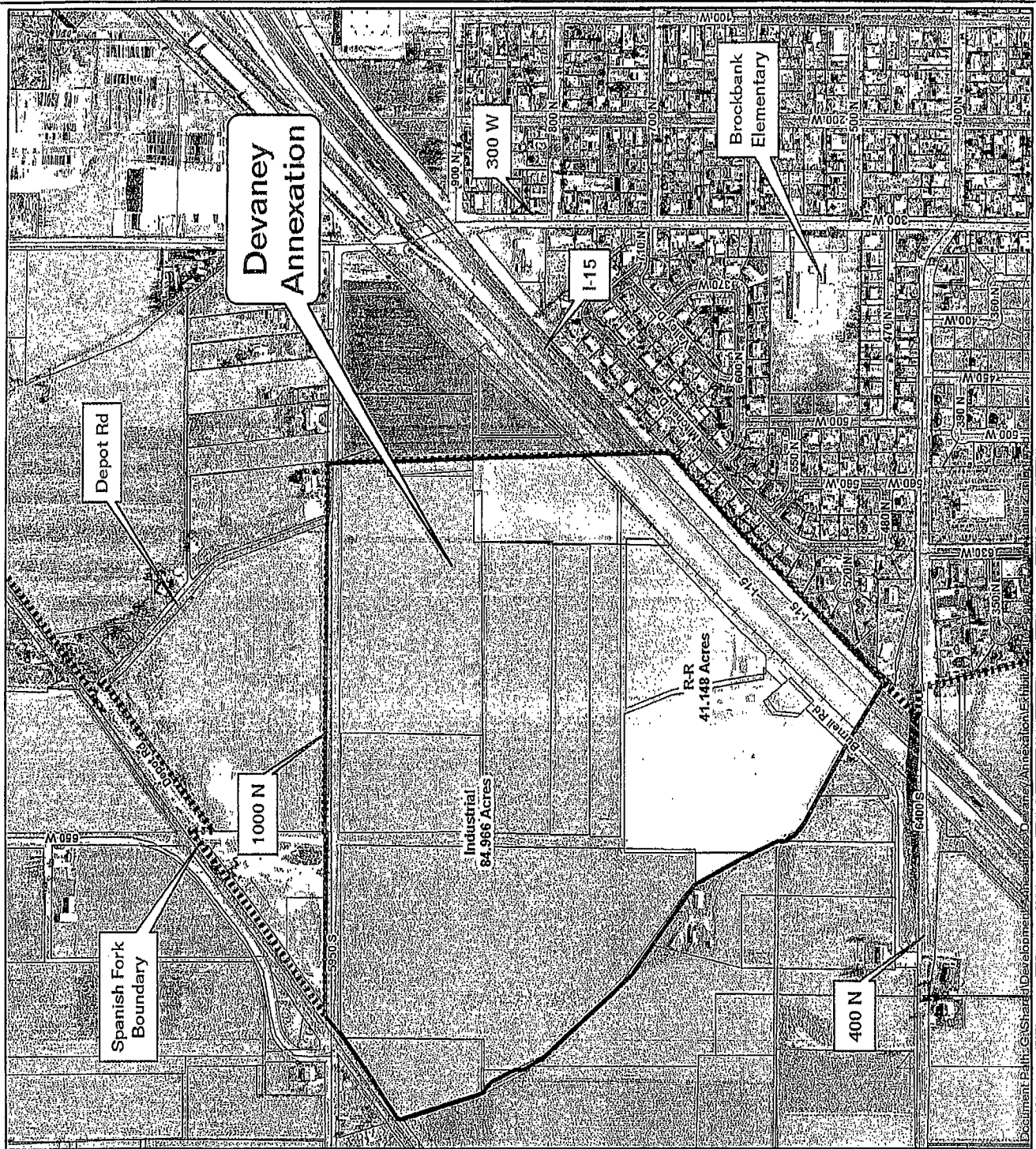


Exhibit A (Devaney Annexation Zoning)



1" = 600 Ft

- Legend**
- Devaney Annexation
 - Devaney Annexation Zoning
 - Industrial
 - R-R
 - Ponds
 - Not Paved
 - Paved
 - Railroad
 - County SF Parcels
 - Spanish Fork Boundary

Print Date: 3/17/2015



GEOGRAPHIC INFORMATION SYSTEMS
 Spanish Fork City GIS
 40 South Main St
 Spanish Fork, UT 84660
 GIS Phone Numbers:
 (801) 804-4571 (Administrator)
 (801) 804-4572 (Interns)

Disclaimer: Spanish Fork City makes no warranty with respect to the accuracy, completeness, or usefulness of these maps. Spanish Fork City assumes no liability for any loss or damage, including consequential damages, resulting from the use of these maps. Portions may be copied for individual use, but may not be resold.

Document Path: G:\Shared\Development\GIS\Devaney Annexation\Exhibit A

EDWARD HALL JOHNSON, DO HEREBY CERTIFY THAT THIS IS A TRUE AND ACCURATE MAP OF THE TRACT OF LAND TO BE ANNEXED INTO SPANISH FORK CITY, UTAH COUNTY, UTAH.

[illegible]


 GERALD JOHNSON
 PROFESSIONAL LAND SURVEYOR
 LICENSE NO. 34387



THIS IS TO CERTIFY THAT THE SPANISH FORK CITY COUNCIL HAVE RECEIVED A PETITION SIGNED BY THE MAJORITY OF THE OWNERS OF THE TRACT OF LAND SHOWN HEREIN REQUESTING THAT THE SAME BE RECLASSIFIED TO RESIDENTIAL ZONING. THE TRACT OF LAND SHOWN HEREIN IS LOCATED IN THE CITY OF SPANISH FORK, MISSISSIPPI, AND IS IDENTIFIED BY THE FOLLOWING: TRACT 100-100-000, TRACT 100-100-001, TRACT 100-100-002, TRACT 100-100-003, TRACT 100-100-004, TRACT 100-100-005, TRACT 100-100-006, TRACT 100-100-007, TRACT 100-100-008, TRACT 100-100-009, TRACT 100-100-010, TRACT 100-100-011, TRACT 100-100-012, TRACT 100-100-013, TRACT 100-100-014, TRACT 100-100-015, TRACT 100-100-016, TRACT 100-100-017, TRACT 100-100-018, TRACT 100-100-019, TRACT 100-100-020, TRACT 100-100-021, TRACT 100-100-022, TRACT 100-100-023, TRACT 100-100-024, TRACT 100-100-025, TRACT 100-100-026, TRACT 100-100-027, TRACT 100-100-028, TRACT 100-100-029, TRACT 100-100-030, TRACT 100-100-031, TRACT 100-100-032, TRACT 100-100-033, TRACT 100-100-034, TRACT 100-100-035, TRACT 100-100-036, TRACT 100-100-037, TRACT 100-100-038, TRACT 100-100-039, TRACT 100-100-040, TRACT 100-100-041, TRACT 100-100-042, TRACT 100-100-043, TRACT 100-100-044, TRACT 100-100-045, TRACT 100-100-046, TRACT 100-100-047, TRACT 100-100-048, TRACT 100-100-049, TRACT 100-100-050, TRACT 100-100-051, TRACT 100-100-052, TRACT 100-100-053, TRACT 100-100-054, TRACT 100-100-055, TRACT 100-100-056, TRACT 100-100-057, TRACT 100-100-058, TRACT 100-100-059, TRACT 100-100-060, TRACT 100-100-061, TRACT 100-100-062, TRACT 100-100-063, TRACT 100-100-064, TRACT 100-100-065, TRACT 100-100-066, TRACT 100-100-067, TRACT 100-100-068, TRACT 100-100-069, TRACT 100-100-070, TRACT 100-100-071, TRACT 100-100-072, TRACT 100-100-073, TRACT 100-100-074, TRACT 100-100-075, TRACT 100-100-076, TRACT 100-100-077, TRACT 100-100-078, TRACT 100-100-079, TRACT 100-100-080, TRACT 100-100-081, TRACT 100-100-082, TRACT 100-100-083, TRACT 100-100-084, TRACT 100-100-085, TRACT 100-100-086, TRACT 100-100-087, TRACT 100-100-088, TRACT 100-100-089, TRACT 100-100-090, TRACT 100-100-091, TRACT 100-100-092, TRACT 100-100-093, TRACT 100-100-094, TRACT 100-100-095, TRACT 100-100-096, TRACT 100-100-097, TRACT 100-100-098, TRACT 100-100-099, TRACT 100-100-100, TRACT 100-100-101, TRACT 100-100-102, TRACT 100-100-103, TRACT 100-100-104, TRACT 100-100-105, TRACT 100-100-106, TRACT 100-100-107, TRACT 100-100-108, TRACT 100-100-109, TRACT 100-100-110, TRACT 100-100-111, TRACT 100-100-112, TRACT 100-100-113, TRACT 100-100-114, TRACT 100-100-115, TRACT 100-100-116, TRACT 100-100-117, TRACT 100-100-118, TRACT 100-100-119, TRACT 100-100-120, TRACT 100-100-121, TRACT 100-100-122, TRACT 100-100-123, TRACT 100-100-124, TRACT 100-100-125, TRACT 100-100-126, TRACT 100-100-127, TRACT 100-100-128, TRACT 100-100-129, TRACT 100-100-130, TRACT 100-100-131, TRACT 100-100-132, TRACT 100-100-133, TRACT 100-100-134, TRACT 100-100-135, TRACT 100-100-136, TRACT 100-100-137, TRACT 100-100-138, TRACT 100-100-139, TRACT 100-100-140, TRACT 100-100-141, TRACT 100-100-142, TRACT 100-100-143, TRACT 100-100-144, TRACT 100-100-145, TRACT 100-100-146, TRACT 100-100-147, TRACT 100-100-148, TRACT 100-100-149, TRACT 100-100-150, TRACT 100-100-151, TRACT 100-100-152, TRACT 100-100-153, TRACT 100-100-154, TRACT 100-100-155, TRACT 100-100-156, TRACT 100-100-157, TRACT 100-100-158, TRACT 100-100-159, TRACT 100-100-160, TRACT 100-100-161, TRACT 100-100-162, TRACT 100-100-163, TRACT 100-100-164, TRACT 100-100-165, TRACT 100-100-166, TRACT 100-100-167, TRACT 100-100-168, TRACT 100-100-169, TRACT 100-100-170, TRACT 100-100-171, TRACT 100-100-172, TRACT 100-100-173, TRACT 100-100-174, TRACT 100-100-175, TRACT 100-100-176, TRACT 100-100-177, TRACT 100-100-178, TRACT 100-100-179, TRACT 100-100-180, TRACT 100-100-181, TRACT 100-100-182, TRACT 100-100-183, TRACT 100-100-184, TRACT 100-100-185, TRACT 100-100-186, TRACT 100-100-187, TRACT 100-100-188, TRACT 100-100-189, TRACT 100-100-190, TRACT 100-100-191, TRACT 100-100-192, TRACT 100-100-193, TRACT 100-100-194, TRACT 100-100-195, TRACT 100-100-196, TRACT 100-100-197, TRACT 100-100-198, TRACT 100-100-199, TRACT 100-100-200, TRACT 100-100-201, TRACT 100-100-202, TRACT 100-100-203, TRACT 100-100-204, TRACT 100-100-205, TRACT 100-100-206, TRACT 100-100-207, TRACT 100-100-208, TRACT 100-100-209, TRACT 100-100-210, TRACT 100-100-211, TRACT 100-100-212, TRACT 100-100-213, TRACT 100-100-214, TRACT 100-100-215, TRACT 100-100-216, TRACT 100-100-217, TRACT 100-100-218, TRACT 100-100-219, TRACT 100-100-220, TRACT 100-100-221, TRACT 100-100-222, TRACT 100-100-223, TRACT 100-100-224, TRACT 100-100-225, TRACT 100-100-226, TRACT 100-100-227, TRACT 100-100-228, TRACT 100-100-229, TRACT 100-100-230, TRACT 100-100-231, TRACT 100-100-232, TRACT 100-100-233, TRACT 100-100-234, TRACT 100-100-235, TRACT 100-100-236, TRACT 100-100-237, TRACT 100-100-238, TRACT 100-100-239, TRACT 100-100-240, TRACT 100-100-241, TRACT 100-100-242, TRACT 100-100-243, TRACT 100-100-244, TRACT 100-100-245, TRACT 100-100-246, TRACT 100-100-247, TRACT 100-100-248, TRACT 100-100-249, TRACT 100-100-250, TRACT 100-100-251, TRACT 100-100-252, TRACT 100-100-253, TRACT 100-100-254, TRACT 100-100-255, TRACT 100-100-256, TRACT 100-100-257, TRACT 100-100-258, TRACT 100-100-259, TRACT 100-100-260, TRACT 100-100-261, TRACT 100-100-262, TRACT 100-100-263, TRACT 100-100-264, TRACT 100-100-265, TRACT 100-1

DATED THIS 2nd DAY OF April
Stan Jelt



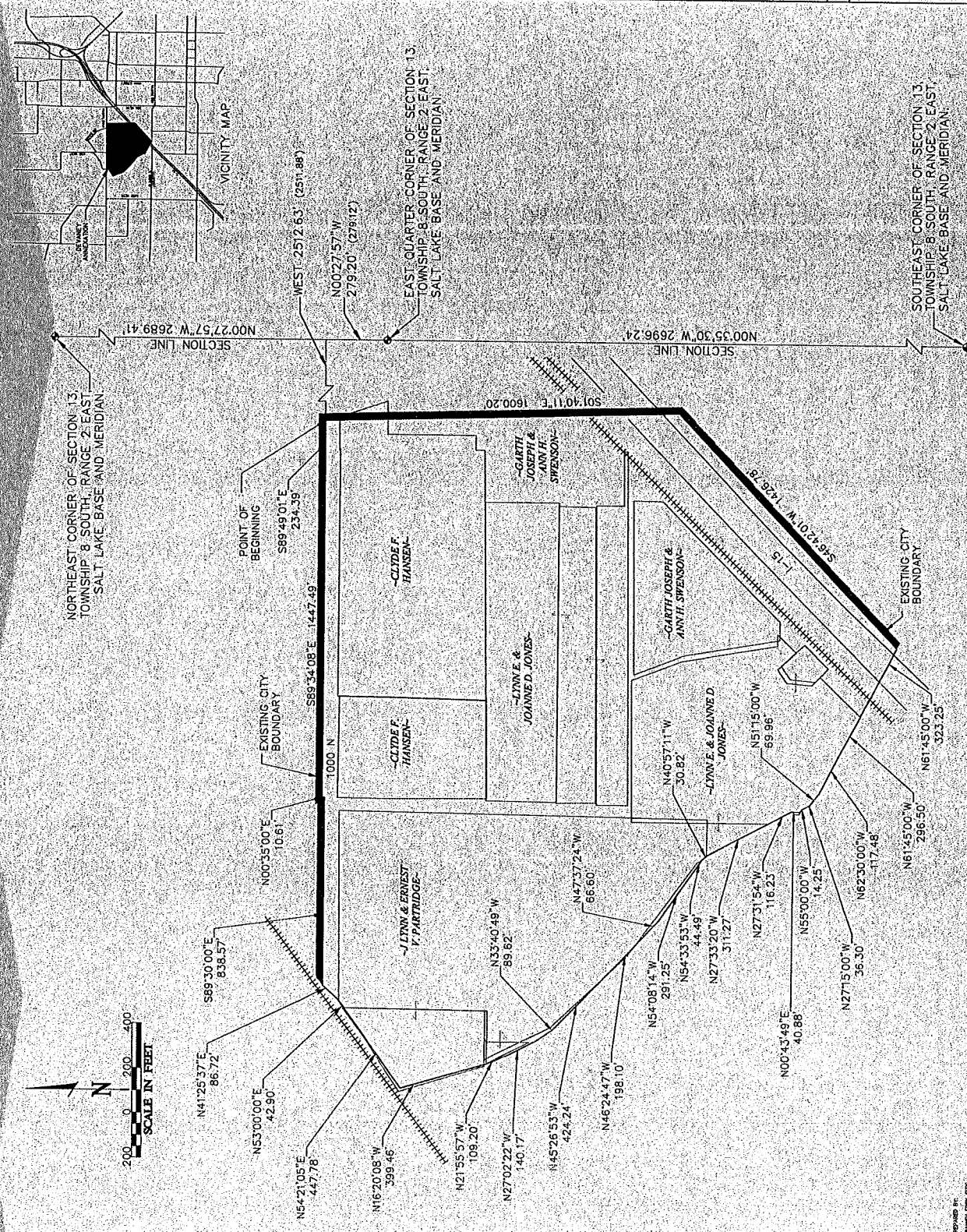
THIS PLAT HAS BEEN REVIEWED BY THE COUNTY SURVEYOR AND IS HEREBY CERTIFIED AS A FINAL LOCAL ENTITY OR A PLAT IN ACCORDANCE WITH UTAH CODE ANNOTATED 19-22-20. APPROVED



DATE _____

DEVANEY
ANNEXATION

SPANISH FORK CITY, _____ UTAH COUNTY, UTAH
SCALE: 1" = 200 FEET



PREPARED BY:
DANISH FORK CITY
3 SOUTH MAIN STREET
DANISH FORK, UTAH 84603