

STATE OF UTAH



OFFICE OF THE LIEUTENANT GOVERNOR

CERTIFICATE OF WITHDRAWAL

I, SPENCER J. COX, LIEUTENANT GOVERNOR OF THE STATE OF UTAH, HEREBY CERTIFY THAT there has been filed in my office a notice of withdrawal of the EAST ZION SPECIAL SERVICE DISTRICT, dated March 25, 2019, complying with Section 17D-1-603, Utah Code Annotated, 1953, as amended.

NOW, THEREFORE, notice is hereby given to all whom it may concern that the attached is a true and correct copy of the notice of withdrawal, referred to above, on file with the Office of the Lieutenant Governor pertaining to EAST ZION SPECIAL SERVICE DISTRICT located in Kane County, State of Utah.

IN TESTIMONY WHEREOF, I have hereunto set my hand, and affixed the Great Seal of the State of Utah this 2nd day of April, 2019 at Salt Lake City, Utah.



A handwritten signature in black ink, appearing to read "Spencer J. Cox".

SPENCER J. COX
Lieutenant Governor



Kane County Commission
Lamont Smith
Andy Gant
Brent Chamberlain
435-644-2458

Lt. Governor Spencer Cox
Utah State Capitol Complex
Suite 220
P.O. Box 142325
Salt Lake City, UT 84114-2220

Re: Withdrawal of land from the East Zion Special Service District ("EZSSD")

Dear Lt. Governor Cox:

Pursuant to Utah Code Section 17D-1-603, notice is hereby filed that on March, 25, 2019, the Kane County Commission adopted a Resolution which approved the withdrawal of certain land from the EZSSD. Enclosed you will find an approved final local entity plat showing the boundaries of the land seeking to be withdrawn from the EZSSD and/or the plat showing the remaining area within/new boundary of the EZSSD.

The Kane County Commission as the approving authority hereby certifies and verifies that all requirements for the withdrawal of certain land from the EZSSD have been met and complied with, and hereby seeks a certificate of withdrawal.

Sincerely,

 3-25-2019
Lamont Smith
Kane County Commission Chair

Enclosures

Kane County Commission
76 N. Main St., Kanab, Utah 84741
Come to Kane County, Where anything is Possible!

KANE COUNTY RESOLUTION NO. R 2019 - 6

**A RESOLUTION WITHDRAWING CERTAIN LAND FROM
THE EAST ZION SPECIAL SERVICE DISTRICT**

WHEREAS, the East Zion Special Service District (“EZSSD”) serves the residential and commercial users for water, sewer, and/or fire services in the East Zion, Utah area; and

WHEREAS, certain area/parcels of property (“Area”) within the EZSSD have pursued different development goals and would now like to withdraw from the EZSSD and create a new local district, which Area is set forth in the legal description attached hereto as Exhibit 1 and depicted generally in the map attached hereto as Exhibit 2; and

WHEREAS, a quorum of the Board was present at a meeting of the Kane County Board of Commissioners to discuss the withdrawal of said Area; and

WHEREAS, pursuant to Utah Code Section 17D-1-601, the Board, as the legislative body of the county or municipality that creates a special service district may by resolution approve the withdrawal of an area from the special district; and


WHEREAS, the Board does not oppose the withdrawal of the Area from the EZSSD and finds that the Area should not be provided the service that the EZSSD provides;

NOW THEREFORE, BE IT RESOLVED BY THE KANE COUNTY BOARD OF COMMISSIONERS, IN AND FOR KANE COUNTY, STATE OF UTAH, AS FOLLOWS:

1. The area identified in Exhibit 1 is hereby withdrawn from the EZSSD.
2. If any provision of this Resolution is determined to be null and void, all other provisions of the Resolution shall remain in full force and effect.

ADOPTED this 25 day of March, 2019.

ATTEST:


KARLA JOHNSON
Kane County Clerk




Lamont Smith, Chair
Board of Commissioners
Kane County

Commissioner Gant voted
Commissioner Chamberlain voted
Commissioner Smith voted

Excused
~~AYE~~
~~AYE~~

EXHIBIT 1

Legal Description:

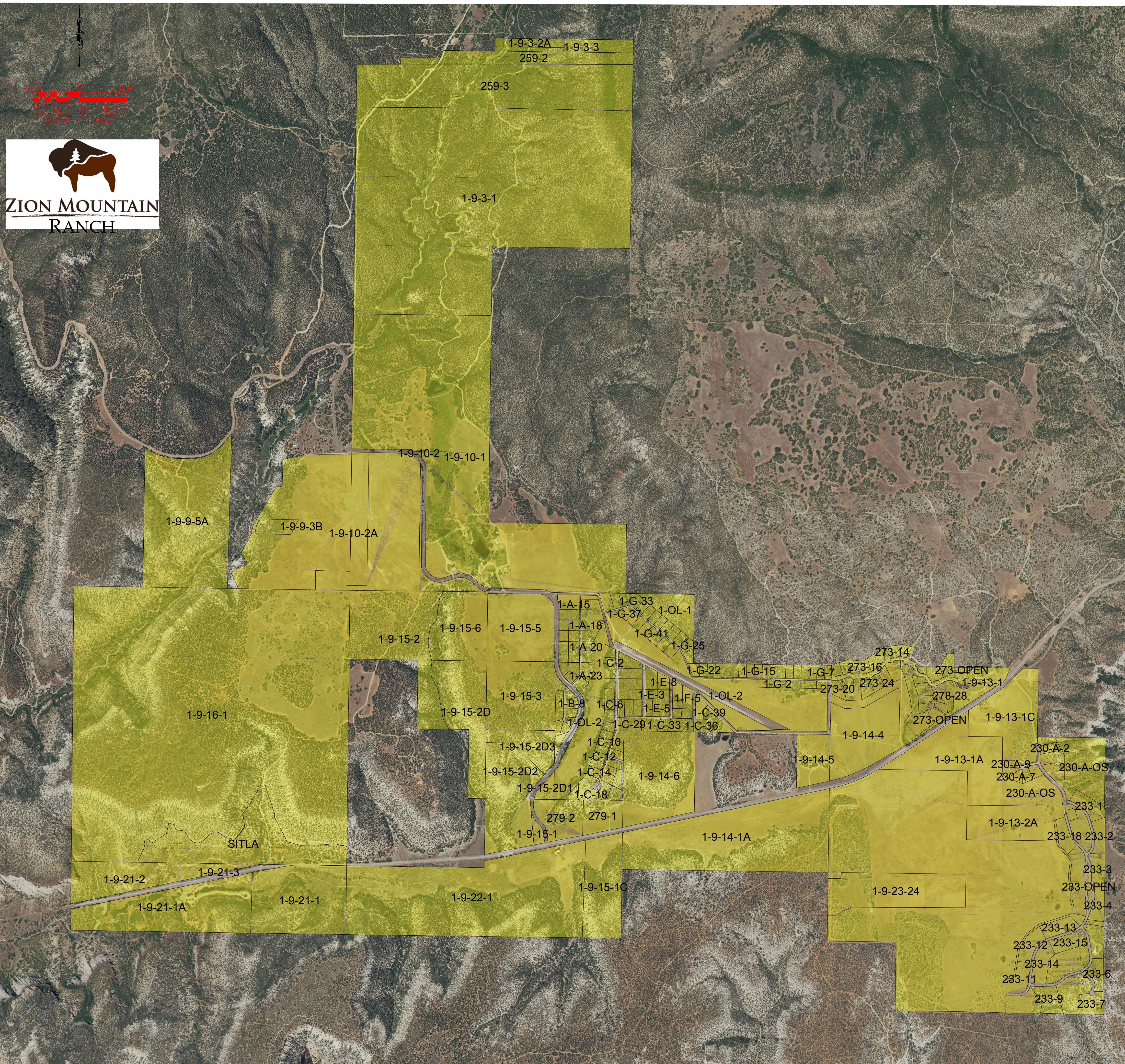
Portions of sections 3, 9, 10, 13, 14, 15, 16, 21, 22, 23, and 24 of Township 41 South, Range 9 West, Salt Lake Base and Meridian more particularly describes as follows:

BEGINNING at the Northwest corner of Section 16, and running; thence, along the section line, South 89° 09' 05" East 1290.94 feet, to the West 1/16th Corner of Sections 9 and 16; thence, along the West 1/16th line, North 00° 50' 35" East 2675.63 feet, to the southernly right-of-way of North Fork Road; thence, along said right-of-way, South 62° 40' 28" East 186.17 feet, to the beginning of a curve; thence, along the curve to the left, 470.28 feet, having a radius of 1013.90 feet, a central angle of 26° 34' 32" and whose long chord bears South 75° 57' 44" East 466.07 feet; thence South 89° 15' 00" East 284.00 feet, to the beginning of a curve; thence, along the curve to the left, 435.72 feet, having a radius of 761.45 feet, a central angle of 32° 47' 11" and whose long chord bears North 74° 21' 25" East 429.80 feet; thence South 00° 42' 30" West 11.86 feet, to the beginning of a non-tangential curve; thence, along the curve to the left, 218.01 feet, having a radius of 771.45 feet, a central angle of 16° 11' 29" and whose long chord bears North 50° 20' 39" East 217.28 feet; thence North 42° 14' 55" East 276.02 feet, to the beginning of a curve; thence, along the curve to the left, 0.99 feet, having a radius of 354.64 feet, a central angle of 00° 09' 38" and whose long chord bears North 42° 10' 06" East 0.99 feet; thence, leaving said right-of-way, South 00° 50' 35" West 2945.57 feet, to the south line of Section 9; thence, along said line, South 89° 11' 38" East 171.56 feet; thence North 10° 48' 55" West 131.30 feet; thence North 20° 56' 05" West 202.49 feet; thence North 63° 20' 04" East 364.60 feet; thence North 34° 39' 51" West 225.63 feet; thence North 28° 18' 24" East 429.33 feet; thence North 10° 17' 40" East 176.35 feet; thence North 27° 21' 41" East 846.08 feet; thence South 88° 58' 04" East 121.90 feet; thence North 00° 49' 11" East 522.89 feet; thence North 81° 12' 20" East 384.73 feet; thence North 87° 51' 02" East 939.78 feet, to the east line of Section 9; thence, along said line, North 00° 47' 41" East 22.69 feet, to the ¼ Corner of Sections 9 and 10; thence, along the section line, North 00° 48' 16" East 2638.54 feet, to the Section Corner of Sections 3, 4, 9, and 10; thence, along the section line, North 00° 46' 29" East 2646.09 feet, to the ¼ corner of Sections 4 and 3; thence, along the section line, North 00° 42' 27" East 2188.39 feet; thence, leaving said section line, South 89° 06' 11" East 880.00 feet; thence North 00° 45' 41" East 103.35 feet; thence South 89° 06' 11" East 726.11 feet, to the beginning of a non-tangential curve; thence, along the curve to the left, 130.99 feet, having a radius 615.00 feet, a central angle of 12° 12' 12" and whose long chord bears North 21° 17' 50" East 130.74 feet, to a non-tangent curve; thence, along the curve to the right, 22.64 feet, having a radius of 610.00 feet, a central angle of 02° 07' 36" and whose long chord bears North 16° 15' 32" East 22.64 feet; thence South 89° 03' 26" East 986.17 feet, to the North-south ¼ line of Section 3; thence, along said line, North 00° 41' 07" East 253.04 feet, to the North ¼ Corner of Section 3; thence, along the section line, South 89° 09' 44" East 2643.36 feet, to the section corner of Sections 2 and 3; thence, along the section line between Sections 2 and 3, South 00° 43' 52" West 2678.51 feet, to the ¼ Corner of Sections 2 and 3; thence, continuing along said section line, South 00° 47' 27" West 1318.64 feet, to the South 1/16th Corner of Sections 2 and 3; thence, along the South 1/16th line of Section 3, North 89° 21' 39" West 2638.79 feet, to the South 1/16th Corner of Section 3; thence, along the North-south ¼ line of said section, South 00° 41' 07" West 1324.35 feet, to the ¼ Corner of Sections 3 and 10; thence, along the North-south ¼ line of Section 10, South 00° 52' 16" West 3951.20 feet, to the South 1/16th Corner of said section; thence, along the South 1/16th line of said section, South 89° 19' 22" East 2641.26 feet, to the South 1/16th Corner of Sections 10 and 11; thence, along the section line of Sections 10 and 11, South 00° 47' 13" West 1316.97 feet, to the Section Corner of Sections 10, 11, 15, and 14; thence, along the section line of Sections 11 and 14, South 88° 55' 22" East 1320.00 feet, to the West 1/16th Corner of Sections 11 and 14; thence, along the West 1/16th line of Section 14, South 00° 48' 41" West 1318.54 feet, to the Northwest 1/16th Corner of said section; thence, along the North 1/16th line, South 89° 07' 09" East 2639.67 feet, to the Northeast 1/16th Corner of said section; thence North 69° 32' 01" East 318.67 feet; thence South 84° 59' 18" East 308.95 feet; thence North 56° 46' 20" East 491.13 feet; thence North 82° 03' 55" East 340.02 feet; thence South 77° 41' 48" East 274.15 feet; thence South 46° 42' 50" West 285.23 feet, to the beginning of a non-tangential curve; thence, along the curve to the right, 100.94 feet, having a radius 68.00 feet, a central angle of 85° 02' 53.1169" and whose long chord bears South 66° 58' 43" East 91.92 feet, to a non-tangent curve; thence, along the curve to the left, 22.44 feet, having a radius of 21.92 feet, a central angle of 58° 38' 53" and whose long chord bears South 53° 46' 43" East 21.47 feet; thence South 83° 12' 13" East 16.31 feet, to the beginning of a curve; thence, along the curve to the right, 105.42 feet, having a radius of 80.00 feet, a central angle of 75° 30' 02" and whose long chord bears South 45° 27' 12" East

97.96 feet; thence South 07° 42' 11" East 21.13 feet, to the beginning of a curve; thence, along the curve to the left, 9.29 feet, having a radius of 14.00 feet, a central angle of 38° 00' 50" and whose long chord bears South 26° 42' 35" East 9.12 feet; thence South 45° 43' 00" East 21.89 feet, to the beginning of a curve; thence, along the curve to the right, 8.24 feet, having a radius of 80.00 feet, a central angle of 05° 54' 02" and whose long chord bears South 42° 45' 59" East 8.24 feet, to the North 1/16th line; thence, along said line, South 89° 07' 00" East 449.38 feet; thence North 27° 13' 41" East 289.76 feet; thence North 90° 00' 00" East 139.16 feet; thence South 00° 00' 00" East 261.70 feet, to said line; thence, along said 1/16th section line, South 89° 07' 03" East 290.71 feet, to the Northwest 1/16th Corner of Section 13; thence, continuing along said line, South 89° 07' 03" East 1323.12 feet, to the North 1/16th section corner of said section; thence, along the North-south ¼ line, South 00° 52' 10" West 1311.84 feet, to the Center ¼ Corner of Section 13; thence, along the East-West ¼ line, South 89° 16' 33" East 1295.50 feet, to the East 1/16th Corner of said section; thence, along the East 1/16th line, South 00° 26' 14" West 2648.21 feet, to the East 1/16th Corner of Sections 13 and 24; thence, along the East 1/16th line, South 00° 37' 54" West 2634.84 feet, to the East 1/16th Corner of Section 24; thence, along the ¼ section line, North 89° 14' 02" West 3959.30 feet, to the ¼ Corner of Sections 23 and 24; thence, along the section line, North 00° 41' 17" East 1319.93 feet, to the North 1/16th Corner of said sections; thence, along the North 1/16th line of Section 23, North 89° 09' 45" West 1320.00 feet, to the Northeast 1/16th Corner of said section; thence, along the East 16th line, North 00° 44' 09" East 1319.98 feet, to the East 1/16th Corner of Section 14 and 23; thence, along the section line of said sections, North 89° 09' 46" West 1318.85 feet, to the ¼ Corner of said sections; thence, continuing along said section line, North 89° 10' 31" West 2641.69 feet, to the section corner of Sections 14, 15, 22, and 23; thence, along the section line of Sections 22 and 23, South 00° 45' 15" West 1319.22 feet, to the North 1/16th Corner of said sections; thence, along the North 1/16th line of Section 22, North 89° 14' 57" West 5283.25 feet, to the North 1/16th Corner of Sections 21 and 22; thence, along the North 1/16th line of Section 21, North 89° 02' 23" West 5271.31 feet, to the North 1/16th Corner of Sections 20 and 21; thence, along said section line, North 00° 38' 03" East 395.59 feet, to the southerly right-of-way of State Highway 9; thence, along said right-of-way, North 78° 20' 04" East 3542.36 feet, to the beginning of a curve; thence, along the curve to the right, 732.53 feet, having a radius of 3769.83 feet, a central angle of 11° 08' 00" and whose long chord bears North 83° 54' 04" East 731.38 feet; thence, North 89° 28' 04" East 1340.70 feet, to the beginning of a curve; thence, along the curve to the left, 163.65 feet, having a radius of 2914.90 feet, a central angle of 03° 13' 00" and whose long chord bears North 87° 51' 34" East 163.63 feet; thence, North 86° 15' 04" East 2004.90 feet, to the beginning of a curve; thence, along the curve to the left, 387.49 feet, having a radius of 2914.90 feet, a central angle of 07° 37' 00" and whose long chord bears North 82° 26' 34" East 387.21 feet; thence, North 78° 38' 04" East 5918.01 feet; thence, leaving said right-of-way along the East line of Parcel 1-9-14-1, North 00° 47' 20" East 1198.37 feet; thence, along the North line of said parcel, North 89° 08' 23" West 1980.46 feet; thence, along the West line of said parcel, South 00° 46' 48" West 1525.03 feet, to the North right-of-way of State Highway 9; thence, along said right-of-way, South 78° 38' 04" West 3913.92 feet, to the beginning of a curve; thence, along the curve to the right, 135.47 feet, having a radius of 2814.90 feet, a central angle of 02° 45' 26" and whose long chord bears South 80° 00' 47" West 135.45 feet; thence, leaving said right-of-way along the North-south ¼ line of Section 15, North 00° 45' 34" East 1056.58 feet, to the South 1/16th Corner of Section 15; thence, along the South 1/16th line of said section, North 89° 29' 04" West 330.80 feet; thence, along the East line of Parcel 1-9-15-4, North 00° 44' 39" East 1316.26 feet; thence, along the East-west ¼ line of said section, North 89° 18' 40" West 991.71 feet, to the West 1/16th Corner of said section; thence, along the West 1/16th line of said section, North 00° 46' 35" East 1319.70 feet, to the Northwest 1/16th Corner of said section; thence, along the East-west 1/16th Line of said section, North 89° 19' 33" West 1322.09 feet, to the North 1/16th Corner of Sections 15 and 16; thence, along the section line of said sections, South 00° 48' 00" West 1319.24 feet, to the ¼ Corner of said sections; thence, along said section line, South 00° 41' 15" West 2568.74 feet, to the north right-of-way of State Highway 9; thence, along said right-of-way, South 89° 28' 04" West 1091.79 feet, to the beginning of a curve; thence, along the curve to the left, 751.96 feet, having a radius of 3869.83 feet, a central angle of 11° 08' 00" and whose long chord bears South 83° 54' 04" West 750.78 feet; thence South 78° 20' 04" West 3520.56 feet, to the west section line of Section 21; thence, leaving said right-of-way along the section line of Sections 20 and 21, North 00° 38' 03" East 816.70 feet, to the section corner of Sections 16, 17, 20, and 21; thence, along the section line of Sections 16 and 17, North 00° 42' 16" East 2637.29 feet, to the ¼ Corner of said sections; thence, continuing along said section line, North 01° 03' 18" East 2631.29 feet, to the POINT OF BEGINNING; containing 3599 acres (more or less).

Parcel #'s:

1-C-37	1-C-10	1-C-15	1-E-8	1-9-15-2D1	1-9-13-1
1-C-25	1-C-26	1-C-17	1-A-24	1-9-15-2D3	1-9-15-1
1-G-9	1-C-4	1-C-16	1-9-15-3	1-9-15-5	1-9-9-5A
1-G-10	1-C-3	1-C-18	1-A-2	1-9-14-6	1-9-9-3B
1-G-11	1-C-9	1-9-10-1	1-A-15	1-9-15-1C	273-1
1-G-12	1-A-11	1-9-13-1	1-A-14	1-9-14-1A	273-21
1-G-13	1-A-5	1-9-15-6	1-G-30	1-9-10-2A	273-22
1-G-14	1-D-5	1-G-35	1-A-27	230-A-4	273-23
1-9-10-1	1-B-7	1-G-34	1-G-38	230-A-5	273-24
1-9-15-2	1-B-3	1-G-33	1-G-37	230-A-1	273-25
1-A-8	1-E-6	1-OL-3	1-OL-2	230-A-3	273-26
1-A-12	1-D-7	1-A-16	1-G-29	230-A-2	273-27
1-A-4	1-D-6	1-OL-3	1-G-39	1-9-13-14-	273-12
1-D-2	1-D-8	1-G-32	1-G-28	23-24	273-11
1-D-10	1-9-10-2	1-G-31	1-A-6	1-9-13-2A	273-10
1-D-9	1-9-10-2	1-A-1	1-A-7	1-9-13-1C	273-9
1-G-1	1-9-13-1A	1-E-7	1-A-10	233-OPEN	273-8
1-G-2	1-G-44	1-B-2	1-A-9	233-19	273-7
1-G-3	1-G-24	1-C-41	1-A-21	230-A-OS	273-6
1-G-4	1-D-1	1-B-8	1-A-22	233-10	273-5
1-G-5	1-D-11	1-C-5	1-G-23	233-18	273-28
1-B-9	1-C-1	1-C-6	1-G-22	233-16	273-29
1-D-3	1-C-2	1-E-4	1-A-26	233-17	273-OPEN
1-G-20	1-9-23-24	1-E-3	1-A-25	233-1	273-20
1-G-19	1-9-21-3	1-E-5	1-G-40	233-8	273-19
1-G-18	1-9-21-2	1-F-1	1-G-27	233-9	273-18
1-G-17	1-9-21-1A	1-C-39	1-G-41	233-6	273-17
1-G-16	1-9-21-1	1-F-2	1-A-18	233-5	273-16
1-G-15	1-OL-1	1-F-3	1-G-42	233-4	273-15
1-D-4	1-OL-2	1-F-5	1-G-26	233-3	273-13
1-E-2	1-9-22-1	1-C-38	1-G-43	233-2	273-4
1-G-36	1-9-14-5	1-C-28	1-G-25	233-12	273-3
1-G-8	1-G-6	1-C-29	1-A-19	233-13	273-2
1-E-1	1-9-14-4	1-C-30	1-A-20	233-15	273-30
1-G-21	1-9-3-1	1-C-31	1-B-6	233-14	273-14
1-9-15-1A	1-9-3-2A	1-C-32	1-B-5	233-11	273-ROADS
1-A-13	1-9-3-3	1-C-33	1-C-7	233-7	SITLA
1-A-3	259-3	1-C-34	1-C-8	230-A-6	279-2
1-C-19	1-G-7	1-F-4	1-B-1	230-A-7	279-1
1-C-20	1-C-27	1-C-35	1-OL-2	230-A-8	
1-C-22	1-C-11	1-C-40	1-A-23	230-A-9	
1-C-23	1-C-12	1-C-36	1-9-15-2D2	1-9-9-3B1	
1-C-21	1-C-24	1-B-4	1-9-15-2D	259-2	
1-C-13	1-C-14	1-A-17	1-9-16-1	1-9-13-1	



Line #	Length	Direction
L1	186.17'	S62° 40' 28"E
L2	284.00'	S89° 03' 00"E
L3	11.86'	S0° 42' 30"W
L4	276.02'	N42° 14' 55"E
L5	2945.57'	S0° 50' 35"W
L6	171.56'	S89° 11' 38"E
L7	131.30'	N10° 48' 55"W
L8	202.49'	N20° 56' 05"W
L9	364.60'	N63° 20' 04"E
L10	225.63'	N34° 39' 51"W
L11	429.33'	N28° 18' 24"E
L12	176.35'	N10° 17' 40"E
L13	846.08'	N27° 21' 41"E
L14	121.90'	S88° 58' 04"E
L15	522.89'	N0° 49' 11"E
L16	384.73'	N81° 12' 20"E
L17	939.78'	N87° 51' 02"E
L18	22.69'	N0° 47' 41"E
L19	880.00'	S89° 06' 11"E
L20	103.35'	N0° 45' 41"E

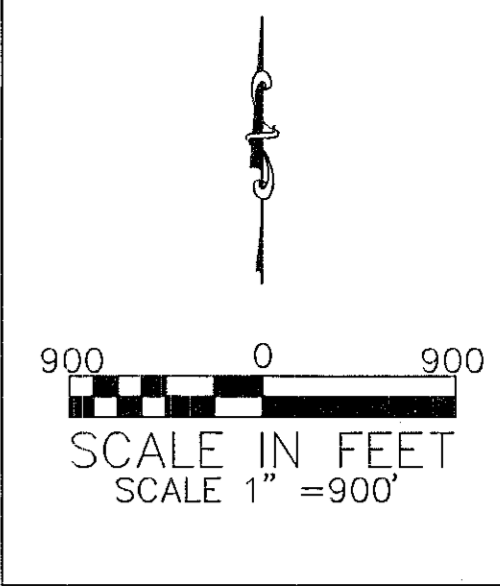
Line #	Length	Direction
L21	726.11'	S89° 06' 11"E
L22	986.17'	S89° 03' 26"E
L23	253.04'	N0° 41' 07"E
L24	318.67'	N69° 32' 01"E
L25	308.95'	S84° 59' 18"E
L26	491.13'	N56° 46' 20"E
L27	340.02'	N82° 03' 55"E
L28	274.15'	S77° 41' 48"E
L29	285.23'	S46° 42' 50"W
L30	16.31'	S83° 12' 13"E
L31	21.13'	S7° 42' 11"E
L32	21.89'	S45° 43' 00"E
L33	449.38'	S89° 07' 00"E
L34	289.76'	N27° 13' 41"E
L35	139.16'	N90° 00' 00"E
L36	261.70'	S0° 00' 00"E
L37	290.71'	S89° 07' 03"E
L38	1323.12'	S89° 07' 03"E
L39	1311.84'	S0° 52' 10"W
L40	1295.50'	S89° 16' 33"E

Line #	Length	Direction
L41	395.59'	N0° 38' 03"E
L42	1056.58'	N0° 45' 34"E
L43	330.80'	N89° 29' 04"W
L44	991.71'	N89° 18' 40"W
L45	1322.09'	N89° 19' 33"W
L46	1091.79'	S89° 28' 04"W
L47	816.70'	N0° 38' 03"E

Curve #	Length	Radius	Delta	Long Chord Bearing	Long Chord Distance
C1	470.28'	1013.90'	26°34'32"	S75° 57' 44"E	466.07'
C2	435.72'	761.45'	32°47'11"	N74° 21' 25"E	429.80'
C3	218.01'	771.45'	16°11'29"	N50° 20' 39"E	217.28'
C4	0.99'	354.64'	0°09'38"	N42° 10' 06"E	0.99'
C5	130.99'	615.00'	12°12'12"	N21° 17' 50"E	130.74'
C6	22.64'	610.00'	2°07'36"	N16° 15' 32"E	22.64'
C7	100.94'	68.00'	85°02'53"	S66° 58' 43"E	91.92'
C8	22.44'	21.92'	58°38'53"	S53° 46' 43"E	21.47'
C9	105.42'	80.00'	75°30'03"	S45° 27' 12"E	97.96'
C10	9.29'	14.00'	38°00'50"	S26° 42' 35"E	9.12'
C11	8.24'	80.00'	5°54'02"	S42° 45' 59"E	8.24'
C12	732.53'	3769.83'	11°08'00"	N83° 54' 04"E	731.38'
C13	163.65'	2914.90'	3°13'00"	N87° 51' 34"E	163.63'
C14	387.49'	2914.90'	7°37'00"	N82° 26' 34"E	387.21'
C15	135.47'	2814.90'	2°45'27"	S80° 00' 47"W	135.45'
C16	751.96'	3869.83'	11°08'00"	S83° 54' 04"W	750.78'

WITHDRAWAL OF LAND FROM THE EAST ZION SPECIAL SERVICE DISTRICT BOUNDARY PLAT

KANE COUNTY, UTAH
LOCATED IN SECTIONS 3, 9, 10, 13, 14, 15, 16, 21, 22, 23, AND 24
TOWNSHIP 41 SOUTH, RANGE 9 WEST,
SALT LAKE BASE AND MERIDIAN



Building on Solid Foundations
460 E. 300 SOUTH
KANAB, UTAH 84741
435-644-2031
www.ironrockeng.com

District Boundary Description:

Portions of sections 3, 9, 10, 13, 14, 15, 16, 21, 22, 23, and 24 of Township 41 South, Range 9 West, Salt Lake Base and Meridian more particularly describes as follows:
BEGINNING at the Northwest corner of Section 16, and running; thence, along the section line, South 89° 09' 05" East 1290.94 feet, to the West 1/16th Corner of Sections 9 and 16; thence, along the West 1/16th line, North 00° 50' 35" East 2675.63 feet, to the southerly right-of-way of North Fork Road; thence, along said right-of-way, South 62° 40' 28" East 186.17 feet, to the beginning of a curve; thence, along the curve to the left, 470.28 feet, having a radius of 1013.90 feet, a central angle of 26° 34' 32" and whose long chord bears South 75° 57' 44" East 466.07 feet; thence South 89° 15' 00" East 284.00 feet, to the beginning of a curve; thence, along the curve to the left, 435.72 feet, having a radius of 761.45 feet, a central angle of 32° 47' 11" and whose long chord bears North 74° 21' 25" East 429.80 feet; thence South 00° 42' 30" West 11.86 feet, to the beginning of a non-tangential curve; thence, along the curve to the left, 218.01 feet, having a radius of 771.45 feet, a central angle of 16° 11' 29" and whose long chord bears North 50° 20' 39" East 217.28 feet; thence North 42° 14' 55" East 276.02 feet, to the beginning of a curve; thence, along the curve to the left, 0.99 feet, having a radius of 354.64 feet, a central angle of 00° 09' 38" and whose long chord bears North 42° 10' 06" East 0.99 feet; thence, leaving said right-of-way, South 00° 50' 35" West 2945.57 feet, to the south line of Section 9; thence, along said line, South 89° 11' 38" East 171.56 feet; thence North 10° 48' 55" West 131.30 feet; thence North 20° 56' 05" West 202.49 feet; thence North 63° 20' 04" East 364.60 feet; thence North 34° 39' 51" West 225.63 feet; thence North 28° 18' 24" East 429.33 feet; thence North 10° 17' 40" East 176.35 feet; thence North 27° 21' 41" East 846.08 feet; thence South 88° 58' 04" East 121.90 feet; thence North 00° 49' 11" East 522.89 feet; thence North 81° 12' 20" East 384.73 feet; thence North 87° 51' 02" East 939.78 feet, to the east line of Section 9; thence, along said line, North 00° 47' 41" East 22.69 feet, to the ¼ Corner of Sections 9 and 10; thence, along the section line, North 00° 48' 16" East 2638.54 feet, to the Section Corner of Sections 3, 4, 9, and 10; thence, along the section line, North 00° 46' 29" East 2646.09 feet, to the ¼ corner of Sections 4 and 3; thence, along the section line, North 00° 42' 27" East 2188.39 feet; thence, leaving said section line, South 89° 06' 11" East 880.00 feet; thence North 00° 45' 41" East 103.35 feet; thence South 89° 06' 11" East 726.11 feet, to the beginning of a non-tangential curve; thence, along the curve to the left, 130.99 feet, having a radius of 615.00 feet, a central angle of 12° 12' 12" and whose long chord bears North 21° 17' 50" East 130.74 feet, to a non-tangent curve; thence, along the curve to the right, 22.64 feet, having a radius of 610.00 feet, a central angle of 02° 07' 36" and whose long chord bears North 16° 15' 32" East 22.64 feet; thence South 89° 03' 26" East 986.17 feet, to the North-south ¼ line of Section 3; thence, along said line, North 00° 41' 07" East 253.04 feet, to the North ¼ Corner of Section 3; thence, along the section line, South 89° 09' 44" East 2643.36 feet, to the section corner of Sections 2 and 3; thence, along the section line between Sections 2 and 3, South 00° 43' 52" West 2678.51 feet, to the ¼ Corner of Sections 2 and 3; thence, continuing along said section line, South 00° 47' 27" West 1318.64 feet, to the South 1/16th Corner of Sections 2 and 3; thence, along the South 1/16th line of Section 3, North 89° 21' 39" West 2638.79 feet, to the South 1/16th Corner of Section 3; thence, along the North-south ¼ line of said section, South 00° 41' 07" West 1324.35 feet, to the ¼ Corner of Sections 3 and 10; thence, along the North-south ¼ line of Section 10, South 00° 52' 16" West 3951.20 feet, to the South 1/16th Corner of said section; thence, along the South 1/16th line of said section, South 89° 19' 22" East 2641.26 feet, to the South 1/16th Corner of Sections 10 and 11; thence, along the section line of Sections 10 and 11, South 00° 47' 13" West 1316.97 feet, to the Section Corner of Sections 10, 11, 15, and 14; thence, along the section line of Sections 11 and 14, South 88° 55' 22" East 1320.00 feet, to the West 1/16th Corner of Sections 11 and 14; thence, along the West 1/16th line of Section 14, South 00° 48' 41" West 1318.54 feet, to the Northwest 1/16th Corner of said section; thence, along the North 1/16th line, South 89° 07' 09" East 2639.67 feet, to the Northeast 1/16th Corner of said section; thence North 69° 32' 01" East 318.67 feet; thence South 84° 59' 18" East 308.95 feet; thence North 56° 46' 20" East 491.13 feet; thence North 82° 03' 55" East 340.02 feet; thence South 77° 41' 48" East 274.15 feet; thence South 46° 42' 50" West 285.23 feet, to the beginning of a non-tangential curve; thence, along the curve to the right, 100.94 feet, having a radius of 68.00 feet, a central angle of 85° 02' 53.1169" and whose long chord bears South 66° 58' 43" East 91.92 feet, to a non-tangent curve; thence, along the curve to the left, 22.44 feet, having a radius of 21.92 feet, a central angle of 58° 38' 53" and whose long chord bears South 53° 46' 43" East 21.47 feet; thence South 83° 12' 13" East 16.31 feet, to the beginning of a curve; thence, along the curve to the right, 105.42 feet, having a radius of 80.00 feet, a central angle of 75° 30' 02" and whose long chord bears South 45° 27' 12" East 97.96 feet; thence South 07° 42' 11" East 21.13 feet, to the beginning of a curve; thence, along the curve to the left, 9.29 feet, having a radius of 14.00 feet, a central angle of 38° 00' 50" and whose long chord bears South 26° 42' 35" East 9.12 feet; thence South 45° 43' 00" East 21.89 feet, to the beginning of a curve; thence, along the curve to the right, 8.24 feet,

having a radius of 80.00 feet, a central angle of 05° 54' 02" and whose long chord bears South 42° 45' 59" East 8.24 feet, to the North 1/16th line; thence, along said line, South 89° 07' 00" East 449.38 feet; thence North 27° 13' 41" East 289.76 feet; thence North 90° 00' 00" East 139.16 feet; thence South 00° 00' 00" East 261.70 feet, to said line; thence, along said 1/16th section line, South 89° 07' 03" East 290.71 feet, to the Northwest 1/16th Corner of Section 13; thence, continuing along said line, South 89° 07' 03" East 1323.12 feet, to the North 1/16th section corner of said section; thence, along the North-south ¼ line, South 00° 52' 10" West 1311.84 feet, to the Center ¼ Corner of Section 13; thence, along the East-West ¼ line, South 89° 16' 33" East 1295.50 feet, to the East 1/16th Corner of said section; thence, along the East 1/16th line, South 00° 26' 14" West 2648.21 feet, to the East 1/16th Corner of Sections 13 and 24; thence, along the East 1/16th line, South 00° 37' 54" West 2634.84 feet, to the East 1/16th Corner of Section 24; thence, along the ¼ section line, North 89° 14' 02" West 3959.30 feet, to the ¼ Corner of Sections 23 and 24; thence, along the section line, North 00° 41' 17" East 1319.93 feet, to the North 1/16th Corner of said sections; thence, along the North 1/16th line of Section 23, North 89° 09' 45" West 1320.00 feet, to the Northeast 1/16th Corner of said section; thence, along the East 1/16th line, North 00° 44' 09" East 1319.98 feet, to the East 1/16th Corner of Section 14 and 23; thence, along the section line of said sections, North 89° 09' 46" West 1318.85 feet, to the ¼ Corner of said sections; thence, continuing along said section line, North 89° 10' 31" West 2641.69 feet, to the section corner of Sections 14, 15, 22, and 23; thence, along the section line of Sections 22 and 23, South 00° 45' 15" West 1319.22 feet, to the North 1/16th Corner of said sections; thence, along the North 1/16th line of Section 22, North 89° 14' 57" West 5283.25 feet, to the North 1/16th Corner of Sections 21 and 22; thence, along the North 1/16th line of Section 21, North 89° 02' 23" West 5271.31 feet, to the North 1/16th Corner of Sections 20 and 21; thence, along said section line, North 00° 38' 03" East 395.59 feet, to the southerly right-of-way of State Highway 9; thence, along said right-of-way, North 78° 20' 04" East 3542.36 feet, to the beginning of a curve; thence, along the curve to the right, 732.53 feet, having a radius of 3769.83 feet, a central angle of 11° 08' 00" and whose long chord bears North 83° 54' 04" East 731.38 feet; thence, North 89° 28' 04" East 1340.70 feet, to the beginning of a curve; thence, along the curve to the left, 163.65 feet, having a radius of 2914.90 feet, a central angle of 03° 13' 00" and whose long chord bears North 87° 51' 34" East 163.63 feet; thence, North 86° 15' 04" East 2004.90 feet, to the beginning of a curve; thence, along the curve to the left, 387.49 feet, having a radius of 2914.90 feet, a central angle of 07° 37' 00" and whose long chord bears North 82° 26' 34" East 387.21 feet; thence, North 78° 38' 04" East 5918.01 feet; thence, leaving said right-of-way along the East line of Parcel 1-9-14-1, North 00° 47' 20" East 1198.37 feet; thence, along the North line of said parcel, North 89° 08' 23" West 1980.46 feet; thence, along the West line of said parcel, South 00° 46' 48" West 1525.03 feet, to the North right-of-way of State Highway 9; thence, along said right-of-way, South 78° 38' 04" West 3913.92 feet, to the beginning of a curve; thence, along the curve to the right, 135.47 feet, having a radius of 2814.90 feet, a central angle of 02° 45' 26" and whose long chord bears South 80° 00' 47" West 135.45 feet; thence, leaving said right-of-way along the North-south ¼ line of Section 15, North 00° 45' 34" East 1056.58 feet, to the South 1/16th Corner of Section 15; thence, along the South 1/16th line of said section, North 89° 29' 04" West 330.80 feet; thence, along the East line of Parcel 1-9-15-4, North 00° 44' 39" East 1316.26 feet; thence, along the East-west ¼ line of said section, North 89° 18' 40" West 991.71 feet, to the West 1/16th Corner of said section; thence, along the West 1/16th line of said section, North 00° 46' 35" East 1319.70 feet, to the Northwest 1/16th Corner of said section; thence, along the East-west 1/16th Line of said section, North 89° 19' 33" West 1322.09 feet, to the North 1/16th Corner of Sections 15 and 16; thence, along the section line of said sections, South 00° 48' 00" West 1319.24 feet, to the ¼ Corner of said sections; thence, along said section line, South 00° 41' 15" West 2568.74 feet, to the north right-of-way of State Highway 9; thence, along said right-of-way, South 89° 28' 04" West 1091.79 feet, to the beginning of a curve; thence, along the curve to the left, 751.96 feet, having a radius of 3869.83 feet, a central angle of 11° 08' 00" and whose long chord bears South 83° 54' 04" West 750.78 feet; thence South 78° 20' 04" West 3520.56 feet, to the west section line of Section 21; thence, leaving said right-of-way along the section line of Sections 20 and 21, North 00° 38' 03" East 816.70 feet, to the section corner of Sections 16, 17, 20, and 21; thence, along the section line of Sections 16 and 17, North 00° 42' 16" East 2637.29 feet, to the ¼ Corner of said sections; thence, continuing along said section line, North 01° 03' 18" East 2631.29 feet, to the POINT OF BEGINNING; containing 3599 acres (more or less).

List of Included Parcels:

1-C-37	1-9-23-24	1-9-15-3	233-6
1-C-25	1-9-21-3	1-A-2	233-5
1-G-9	1-9-21-2	1-A-15	233-4
1-G-10	1-9-21-1A	1-A-14	233-3
1-G-11	1-9-21-1	1-G-30	233-2
1-G-12	1-OL-1	1-A-27	233-12
1-G-13	1-OL-2	1-G-38	233-13
1-G-14	1-9-22-1	1-G-37	233-15
1-9-10-1	1-9-14-5	1-OL-2	233-14
1-9-15-2	1-G-6	1-G-29	233-11
1-A-8	1-9-14-4	1-G-39	233-7
1-A-12	1-9-3-1	1-G-28	230-A-6
1-A-4	1-9-3-2A	1-A-6	230-A-7
1-D-2	1-9-3-3	1-A-7	230-A-8
1-D-10	259-3	1-A-10	230-A-9
1-D-9	1-G-7	1-A-9	1-9-9-3B1
1-G-1	1-C-27	1-A-21	259-2
1-G-2	1-C-11	1-A-22	1-9-13-1
1-G-3	1-C-12	1-G-23	1-9-13-1
1-G-4	1-C-24	1-G-22	1-9-15-1
1-G-5	1-C-14	1-A-26	1-9-9-5A
1-B-9	1-C-15	1-A-25	1-9-9-3B
1-D-3	1-C-17	1-G-40	273-1
1-G-20	1-C-16	1-G-27	273-21
1-G-19	1-C-18	1-G-41	273-22
1-G-18	1-9-10-1	1-A-18	273-23
1-G-17	1-9-13-1	1-G-42	273-24
1-G-16	1-9-15-6	1-G-26	273-25
1-G-15	1-G-35	1-G-43	273-26
1-D-4	1-G-34	1-G-25	273-27
1-E-2	1-G-33	1-A-19	273-12
1-G-36	1-OL-3	1-A-20	273-11
1-G-8	1-A-16	1-B-6	273-10
1-E-1	1-OL-3	1-B-5	273-9
1-G-21	1-G-32	1-C-7	273-8
1-9-15-1A	1-G-31	1-C-8	273-7
1-A-13	1-A-1	1-B-1	273-6
1-A-3	1-E-7	273-5	
1-C-19	1-B-2	1-A-23	273-28
1-C-20	1-C-41	1-9-15-2D2	273-29
1-C-22	1-B-8	1-9-15-2D	273-OPEN
1-C-23	1-C-5	1-9-16-1	273-20
1-C-21	1-C-6	1-9-15-2D1	273-19
1-C-13	1-E-4	1-9-15-2D3	273-18
1-C-10	1-E-3	1-9-15-5	273-17
1-C-26	1-E-5	1-9-14-6	273-16
1-C-4	1-F-1	1-9-15-1C	273-15
1-C-3	1-C-39	1-9-14-1A	273-13
1-C-9	1-F-2	1-9-10-2A	273-4
1-A-11	1-F-3	230-A-4	273-3
1-A-5	1-F-5	230-A-5	273-2
1-D-5	1-C-38	230-A-1	273-30
1-B-7	1-C-28	230-A-3	273-14
1-B-3	1-C-29	230-A-2	273-ROADS
1-E-6	1-C-30	1-9-13-14-23-24	SITLA
1-D-7	1-C-31	1-9-13-2A	279-2
1-D-6	1-C-32	1-9-13-1C	279-1
1-D-8	1-C-33	233-OPEN	
1-9-10-2	1-C-34	233-19	
1-9-10-2	1-F-4	230-A-OS	
1-9-13-1A	1-C-35	233-10	
1-G-44	1-C-40	233-18	
1-G-24	1-C-36	233-16	
1-D-1	1-B-4	233-17	
1-D-11	1-A-17	233-1	
1-C-1	1-E-8	233-8	
1-C-2	1-A-24	233-9	

WITHDRAWAL OF LAND FROM THE EAST
ZION SPECIAL SERVICE DISTRICT
BOUNDARY PLAT

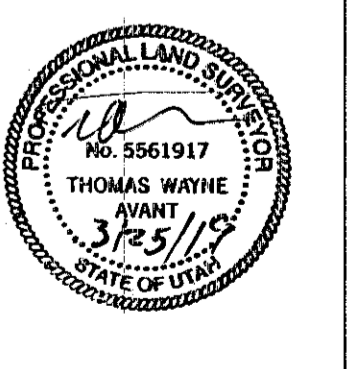
EAST ZION, KANE COUNTY, UTAH

INITIAL SUBMITTAL DATE: 3/20/2019

DESCRIPTION:

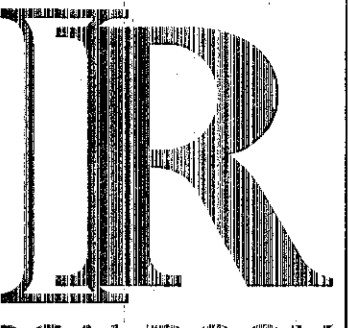
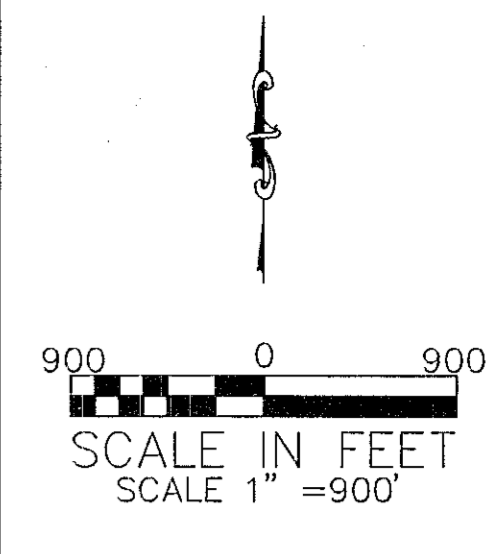
DATE:

REV#



WITHDRAWAL OF LAND FROM THE EAST ZION SPECIAL SERVICE DISTRICT BOUNDARY PLAT

KANE COUNTY, UTAH
 LOCATED IN SECTIONS 3, 9, 10, 13, 14, 15, 16, 21, 22, 23, AND 24
 TOWNSHIP 41 SOUTH, RANGE 9 WEST,
 SALT LAKE BASE AND MERIDIAN



IRON ROCK
 ENGINEERING
 SURVEYING & DESIGN

Building on Solid Foundations

460 E. 300 SOUTH
 KANAB, UTAH 84741
 435-644-2031
 www.ironrockeng.com

SURVEYOR'S CERTIFICATE

I, Thomas W. Avant, a Professional Land Surveyor, License Number 5561917, hold this license in accordance with Title 58, Chapter 22, Professional Engineers and Professional Land Surveyors Licensing Act and have completed this survey of the property described hereon in accordance with Section 17-23-17 and have verified all measurements and have placed monuments as represented on this District Boundary Plat.

Thomas W. Avant
 Thomas W. Avant, PLS # 5561917

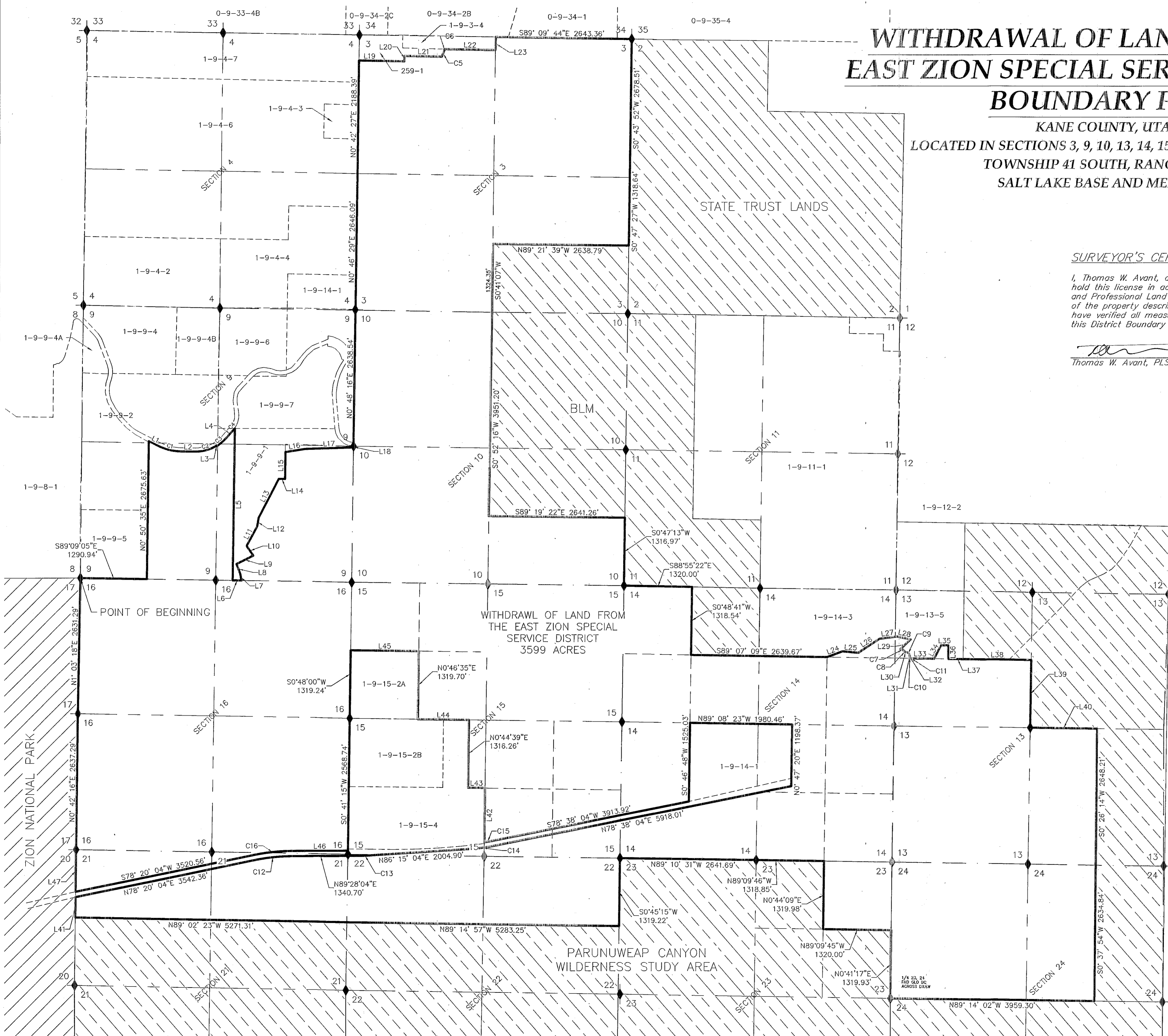
3/25/19
 Date:

LEGEND

- SECTION CORNER AS NOTED
- SURVEY BOUNDARY
- ADJACENT PROPERTY LINE
- SECTION LINE
- 1/4 SECTION LINE
- 1/8 SECTION LINE

WITHDRAWAL OF LAND FROM THE EAST ZION SPECIAL SERVICE DISTRICT BOUNDARY PLAT

EAST ZION, KANE COUNTY, UTAH



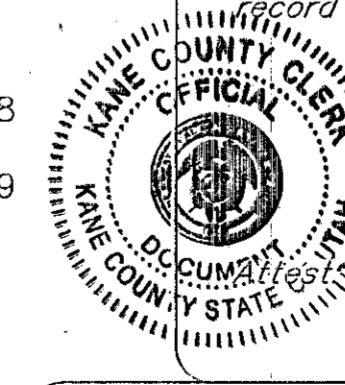
COUNTY SURVEYOR CERTIFICATE

I, THOMAS SADDERS, Kane County Surveyor, do hereby certify that this office has examined the above Boundary Plat and has determined that it is correct and in accordance with information on file in this office and recommend it for approval this 20th day of MARCH, 2019.

Thomas Sadders
 KANE COUNTY SURVEYOR
 Kane County, Utah

by the Kane County Commission

We the Kane County Commission have reviewed the hereon Boundary Plat and by authorization of said Kane County Commission recorded in the minutes of its meeting of the 20th day of MARCH, 2019, hereby accept the said Boundary Plat with all commitments and all obligations pertaining thereto and is hereby ordered filed for record in the Office of the Kane County Recorder.



Karl Johnson
 Chairman
Lawrence Smith
 Kane County Commission
 Kane County, Utah

CERTIFICATE OF RECORDING

I, _____, Recorder of Kane County, do hereby certify that above Boundary Plat was filed for recording in my office this _____ day of _____, 20____.

KANE COUNTY RECORDER ENTRY NO. _____

RECORDED AND FILED AT THE REQUEST OF: _____

DATE _____ TIME _____ BOOK _____ PAGE _____ FEE _____

INITIAL SUBMITTAL DATE: 3/20/2019

DESCRIPTION:

DATE:

REV#:

DRAWN BY: MJS

SCALE: 1"= 900'

SHEET:

1 OF 2

